

YEAR IN REVIEW

2023



14th Largest County in Oregon
Population: 87,433 (2020 Census)
Total Est Households: 29,692
Median Income: \$62,691
Median Age: 37 Years

SHERIFF MARK GARTON
POLK COUNTY SHERIFF'S OFFICE

POLK COUNTY SHERIFF'S OFFICE VISION STATEMENT

“The Polk County Sheriff’s Office provides sustainable quality programs and services that focus on the safety and security of our schools, homes, businesses, and highways which contribute to the quality of life for every segment of our community.”



POLK COUNTY SHERIFF'S OFFICE MISSION STATEMENT



“Demonstrating leadership through honoring public trust and developing partnerships within the communities we serve by providing effective law enforcement services which we promote, preserve and deliver public safety and security”

Office Overview	4
Organizational Chart	5
Community Engagement	6
Corrections Division.....	8
Corrections Statistics.....	9
Educational Programming.....	10
Notable Events	11
Patrol Division.....	11
Crimes at a Glance.....	13
Youth Interactions.....	14
Traffic Safety Campaigns.....	14
Volunteer Program Highlights.....	15
Patrol Statistics.....	16
Mobile Crisis Response Team.....	17
Public Safety Operating Levy	18

MESSAGE FROM SHERIFF GARTON

Hello fellow residents,

Polk County has always been a great place to live, work and raise families. Your Sheriff's Office continues to focus on serving the public in a professional, ethical, and compassionate way. We always strive towards excellence in every contact we make.

My commitment to each one of you is that we won't lose focus on our mission, while still upholding our core values while serving you.

Our Core Values

Honor - Integrity - Professionalism - Respect

The Sheriff's Office current operation is partially funded by the Public Safety Levy, initially passed by the voters in May 2015 and renewed two additional times. Prior to the first levy, the Sheriff's Office patrol division only worked 10 hours per day (noon to 10 pm) due to the loss of federal timber payments.

The current renewal of the public safety levy was on the ballot in May of 2023 and passed by 58% of the vote. This levy allows us to maintain at status quo levels. For the renewal we asked voters for 49.5 cents instead of 42.5 cents as in the previous levy. The reason for the increase is the cost of doing business has increased significantly.

There are a lot of nuances in this profession, and I hope that providing you information in the following pages will help you better understand what your Sheriff's Office does on a daily basis.

Over the years I have learned trust is something that can take years to build and a second to destroy. My goal is to continually build trust within the community to ensure that my office meets our core values on every contact we make. I value the trust you have placed in me by electing me as your Sheriff and I know that without that trust, I cannot be effective. I will always strive to improve relationships, to uphold the constitution, to hold people accountable and continually look for ways to improve this office.

Your Polk County Sheriff's Office is full of dedicated people doing a challenging and difficult job every day. They have proven very skillful at adapting in this profession, while remaining focused on our overall mission. I am very proud of their dedication to our county, as they truly attempt to make our community better, one day at a time.

Respectfully,



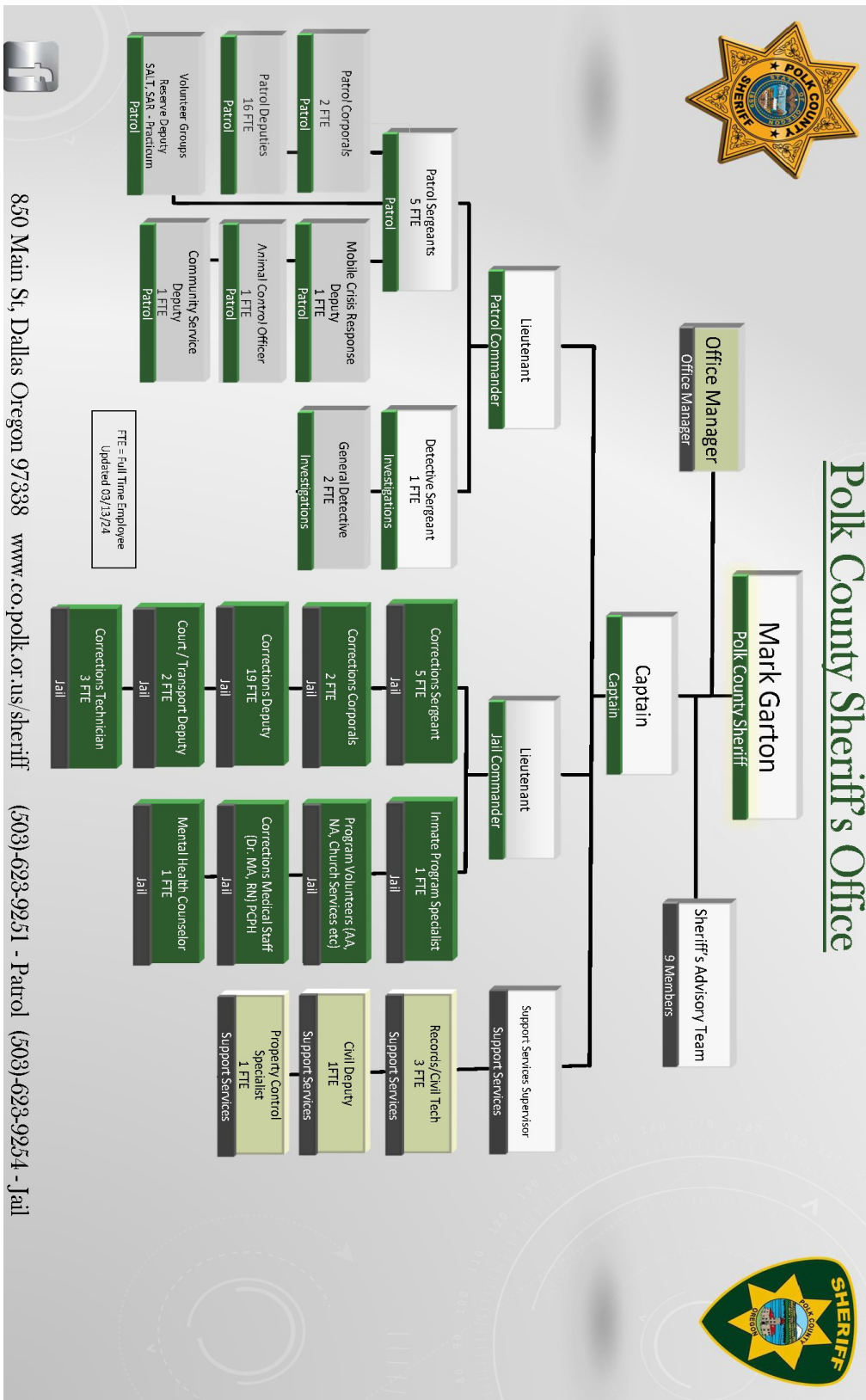
OFFICE OVERVIEW

The Sheriff's Office has two divisions: patrol and corrections. In the corrections division, deputies are assigned to day-to-day jail operations, transports and court security positions. Supporting the day-to-day operations are the Jail Commander, Inmate Program Manager and three corrections technicians who help control movement within the jail.

The patrol division has a variety of different positions and assignments that all work together to make us safer. Deputies may be assigned to patrol, detectives, animal control, community service deputy or Mobile Crisis Response Teams (MCRT). In addition to normal patrol duties, some deputies oversee volunteer programs like search and rescue (SAR), our reserve Deputy program, and the Sheriff's Auxiliary Law Enforcement Team (SALT).

The support services employees are not deputies, but they are the backbone that holds the office together. They process all incoming civil documents (subpoenas, court orders, child custody, marriage dissolution, small claims, etc.), concealed handgun licenses, incoming evidence from the deputies and process all the reports written by the deputies and detectives. On the following page you will

see a organizational chart of the Sheriff's Office which should give a better understanding of how the office is organized.



COMMUNITY ENGAGEMENT

Community engagement is a must in this profession. We have always welcomed new ways to increase community engagement by attending community meetings and events such as: Neighborhood Watch meetings, National Night Out, Coffee with a Cop, Business Associations, and Rotary meetings to name a few.

There are other events that the Sheriff's Office attends and/or provides instruction at on a regular basis, including: the Victim Impact Panel, Court Appointed Special Advocate (CASA) training, Crisis Intervention Training, and Threat Assessment meetings to name a few.



Paws for a Cause



For the 9th year in a row, we held our Paws for a Cause event during the month of July. This program was created after the passing of Sgt. Randy Whitaker on July 18th, 2014. Randy's love of animals, especially his dogs, inspired the creation of this annual event where we accept donations of new and gently used pet supplies. This year we

were able to donate over 1400 pounds of dog and cat food to local shelters and Marion Polk Food Share along with other pet supplies.



Shop with the Sheriff and Toy Drive

The Sheriff's Office continued with their annual tradition of sponsoring "Shop with the Sheriff". This event was different than years past as we had several other cash donations from the public that allowed us to serve even more kids. "Shop with the Sheriff" has been going on for over 25 years. Each year, Walmart provides a grant to

help partially fund this program and other community members volunteer their time and supplies to make this event happen. This year we were able to serve about 40 families during shop with the Sheriff. Members of the law enforcement community help their assigned child find gifts for their immediate family and a gift for themselves. We then help the kids wrap their family's presents. We also had some extra things for the kids too, like a visit from Santa, candy and snacks and a Christmas themed photo booth.



For the sixth year in a row, we were able to partner with two great organizations for their annual toy drives. The Salem Towne Women's Golf Association donated a lot of toys this year. Salem Health - West Valley provided us with a cash donation to put towards our toy drive.

These toys and the cash donation were used to provide gifts to children whose parent(s) may be in jail during the holiday season. With this part of the program, we allow the inmate to pick out a gift from the donated toys. They are then able to wrap the gift themselves along with selecting and personalizing a holiday card. Sheriff's Office deputies and volunteers then arranged to have the presents delivered to or picked up by the family.

CORRECTIONS DIVISION



The Polk County Jail is a 195-bed facility that was built with voter approval in 1997. The Corrections Division (Jail) is staffed with 3 civilian Corrections Technicians, an Inmate Program Specialist, 23 Corrections Deputies, 5 Sergeants, and 1 Lieutenant (Jail Commander) who all work together to provide safety and security for the facility

and inmates while still holding them accountable. The Jail Commander is responsible for overseeing daily jail operations.

The Polk County Jail receives inmates from all the law enforcement agencies within Polk County, including Oregon State Police. The numbers of inmates received at the jail by the individual agencies are listed on the below. We also have a contract with the Benton County Sheriff's Office and the United States Marshal Service to rent up to 10 beds from us at any given time. The inmates from the Marshall service are Federal Inmates under custody by the US Marshals, but just housed in our facility. These contracts will not impact the number of beds available for county use.



A big accomplishment for the jail this past year was the security upgrade. Many of the systems are original from when the jail was built in 1997. The new security upgrades will create efficiency improvements throughout the facility and also improve the safety of both inmates and staff.

CORRECTIONS DIVISION STATISTICS

	2020	2021	2022	2023
Total No. Bookings by Agency	1849	1486	1745	2170
Polk Co. Jail Related books	573	549	398	472
Polk County Sheriff's Office	345	244	307	397
Salem Police	248	175	305	263
Dallas Police	227	142	303	346
Monmouth Police	109	73	119	171
Oregon State Police	46	30	42	36
Independence Police	108	93	94	106
Grand Ronde Tribal Police	113	84	49	84
Other	37	87	128	263

Did you know in 2023 the following occurred inside the jail?

Security Checks Conducted	194,250	Meals Served	88,769
Medical Visits	10,433	Medications Dispensed	78,842
Medication Costs	\$59,738	Mental Health Visits	1947
Program Hours (Church Services, AA, NA, Celebrate Recovery)			7752

Reasons for Release from Custody

Transferred to another facility	585	Time Served	611
Court Ordered Conditional Rel	747	Bailed Out	171
Not filed by DA's Office	29	Court Dismissed	27

	2020	2021	2022	2023
Average Daily Population (days)	74	87	99	116
Avg Length of stay (days)	19	25	22	21
Avg Daily Population Male	63	73	82	95
Avg Daily Population Female	11	14	17	21
People booked only 1 time	1595	972	1011	1188
People booked 2 times	198	324	422	506
People booked 3 times	48	99	138	198
People booked 4 or more times	8	91	174	278

EDUCATIONAL PROGRAMMING

We currently have educational programming on our jail tablets that are available for inmate use. These types of classes are free of charge and available to anyone inside the jail. In total, 369 courses were completed in 2023. The top course types are listed below.

Jobs & Finance: 45%

Academic: 21%

Health & Recovery: 17%

Reentry & Community: 13%

Religion & Spirituality: 2%

Arts & Culture: 1%

Informational: 1%

NOTABLE EVENTS

- Completed Upper Tier Suicide Mitigation Project (2022-2023)
- Security Camera and control panel upgrades (2022-2024)

A lot of time the work of the men and women of the corrections division goes unnoticed, because they are out of sight and out of mind to the majority of the community. I am immensely proud of the work they do every day. Please know that the corrections staff are a highly trained group of individuals who work with compassion and integrity, while holding people accountable for our community.

PATROL DIVISION

The Patrol Division is staffed by a variety of people and roles, ranging from volunteers, deputy sheriff's (police officers) or our support division, which consists of civilians who truly make the office function in an effective and efficient way. Also within



the patrol division are two non-certified positions, Animal Control Deputy and Community Service Deputy. Both positions respond to lower level and animal related calls for service, which allows patrol deputies to focus on follow up investigations, other priority calls for service.

The Patrol Division is staffed for 21 Deputies, 6 sergeants and 1 Lieutenant. Of those 21 deputy positions, deputies are assigned to various positions within the division including Detective (x2), Mobile Crisis Response Team Deputy and Patrol Deputies. We have had multiple vacancies over this past year, and we are working hard to keep vacant positions to a minimum.

The Sheriff's Office currently has two general detectives who focuses

primarily on person crimes, but also can tackle complex property crimes. One of the detectives also manages our digital evidence recovery program.

There are 4 Patrol Sergeants who complement each of our patrol shifts. We also have a detective sergeant, who oversees the detectives and ensures that all members obtain the required training each year. The Det. Sgt. also completes background investigations for new Sheriff's Office applicants.

While the Sheriff's Office does focus on person and property crimes, we also investigate animal related crimes, like animal abuse or neglect. This applies to any animal, domestic or farm type. We routinely investigate complaints of animal abuse or neglect with farm animals. These cases are managed by our animal control deputy, as this position has specialized training that is needed to successfully investigate these types of incidents. In addition to animal crimes, the animal control deputy does enforce dog law violations.

In early 2022, the Sheriff's Office took over dog licensing and the overall responsibility of dog law violations in the city of Dallas as they chose not to provide their program any longer. Due to Polk County being a "dog control district" Polk County must assume authority over dog law violations, without any funding from the city. The only funds generated from this program come from licensing fees.

Within the patrol division, Support services is comprised of 6 civilian employees who provide customer service to the public in a variety of ways. They are responsible for several critical tasks to include processing Concealed Handgun Licenses, Dog Licenses, evidence, accepting and processing court documents, civil paperwork, and other incident reports.

The Sheriff's Office has the statutory requirement to process and serve civil papers throughout the entire county, including inside the city limits. Civil papers include subpoenas, restraining orders, marriage dissolutions, small claims and other court paperwork. Records staff also complete and manage the office wide report writing system and comply with State and Federal regulatory requirements placed upon those systems.

Crimes at a Glance

Type of Crime	2019	2020	2021	2022	2023	+/- % change 2022 to 2023	+/- % change 2019 to 2023
Burg Residence	36	43	28	28	21	-25%	-41.6%
Burg Business	10	5	12	11	12	+9.1%	20%
Theft	223	314	303	277	265	-4.3%	18.8%
Drug	101	80	34	22	18	-18%	-82%
Elude	10	20	19	25	33	+32%	230%
Fraud	69	58	47	14	27	+92.8%	-61%
DUII	186	115	220	134	134	+/-0%	-28%
Assault	175	123	59	67	81	+20.9%	-53.7%
Warrants	302	13	220	175	172	-1.7%	-43%
Reckless Driving	69	55	73	82	90	+9.8%	30.4%
Overall Crimes	2237	2135	2091	1576	1,647	+4.5%	-26.3%

*For most of 2022 & 2023, the Sheriff's Office has been down multiple positions. The number of overall crimes and arrests are down from previous years due to the lack of staffing.



Youth Interaction and arrests

Warrant Arrest	3	Property Crimes -Possession of Stolen Property, Criminal Misch	5
Person Crimes -Assault, Sex Abuse, Menacing, Rape, prostitution related, Attempted Murder	24	Driving Related Crimes -Hit and Run, False Info, Eluding, Stolen Vehicle	13
Total Juveniles Arrested/Referred	52	Other - Drugs, protective custody	7



Traffic Safety Prevention Campaigns

Throughout 2023, the Sheriff's Office participated in multiple Traffic Safety Prevention Campaigns that were above and beyond normal patrol operations. Traffic safety is a high priority within the Sheriff's Office and with that in mind, the office applied for and received grant funding from the Oregon Department of Transportation to conduct multiple traffic safety campaigns throughout 2023 that focus on speeding, Driving Under the Influence (DUI) and distracted driving.

Total Stops during grant periods	977	Other Arrests directly from Grants	12
Citations / Warnings	138/857	Careless Driving Citations	42
Driving While suspended Citations	234	Cell Phone Violations	18

These stats are specific to traffic enforcement overtime provided by ODOT



Volunteer Programs

There are many other facets of the Patrol Division, including managing approximately 100 volunteers across multiple programs: Search and Rescue, Posse, Reserve Deputy Program, Sheriff's Auxiliary and Law Enforcement Team (SALT), Sheriff's Advisory Team (SAT), Cold Case and the Sheriff's Office Chaplains.

The Sheriff's Auxiliary & Law Enforcement Team (SALT) consists of 30 members. In 2023, they volunteered 4,585 hours. These hours represent an equivalent of 2 full time employees. Members of SALT help in various ways, including transporting evidence to and from the Oregon State Police Crime Lab, Court Security Scanning, Fingerprinting, Civil Paper Service, and towing of abandoned vehicles, among other tasks as assigned.

S.A.L.T. Unit



Currently, the Reserve Program consists of 9 Reserve Deputies that volunteered nearly 1100 hours in 2023. Reserve Deputies can volunteer on patrol and ride along with full-time Patrol Deputies. They can also volunteer in the jail, working alongside full-time Corrections Deputies. In addition, the Reserve program is responsible for Marine Patrol functions on the Willamette River. Many reserves go on to become full time deputies here at the Sheriff's Office.



The Oregon State Marine Board contracts with the Polk County Sheriff's Office to patrol nearly 40 miles of the Willamette River within Polk County. This seasonal program, which typically runs from May through September, is fully funded by the Oregon State Marine Board, to include wages, equipment, and

watercraft. Reserve Deputies, who serve as Marine Captains are dedicated to providing a safe boating experience for all boaters in Polk County.

Patrol Statistics

Patrol Statistics			
Total Calls Generated (2023)	17,771 (-8%)	Traffic Crashes (2023)	164 (-26%)
Total Calls Generated (2022)	19,366 (-2%)	Traffic Crashes (2022)	222 (-15%)
Total Calls Generated (2021)	19,716 (+6%)	Traffic Crashes (2021)	260 (-46%)
Total Calls Generated (2020)	18,535 (-20%)	Traffic Crashes (2020)	480 (0%)
Case Reports Generated (2023)	1,891* (-9%)	CHL's Issued (2023)	1,700 (+3%)
Case Reports Generated (2022)	2,081* (-19%)	CHL's Issued (2022)	1,653
Case Reports Generated (2021)	2,579 (+3%)	Civil Docs Processed (2023)	2,039 (+8%)
Case Reports Generated (2020)	2,513 (-16%)	Civil Docs Processed (2022)	1,880
Arrests (2023)	616* (+4%)	Traffic Stops (2023)	4628 – Stops (+21%)
Arrests (2022)	594* (-39%)		3180 – Warn (+29%)
Arrests (2021)	969 (+26%)		1448 – Cites (+8%)
Arrests (2020)	771 (-32%)	Traffic Stops (2022)	3813- Stops (+20%)
			2,474- Warn (+47%)
			1,339 – Cites (-11%)
911 Calls (2023)	4054 (-47%)	Traffic Stops (2021)	3,191 Stops (+6%)
911 Calls (2022)	7,666 (-5%)		1,688 Warn (-4%)
911 Calls (2021)	8,056 (+17%)		1,503 Cites (+18%)
911 Calls (2020)	6,898 (-7%)		
*For most of 2022 & 2023 the Sheriff's Office has been down multiple positions, which affects the overall numbers.			

The chart below represents several other types of calls for service deputies normally encounter while on patrol. These calls generate reports but are not necessarily criminal in nature.

Type	2022	2023	Type	2022	2023
Crash (includes non-DMV reportable)	589	503	General Disturbance	47	53
Animal Related	943	878	Death Investigation	46	41
Overdose	17	22	Driving Complaint	1,381	1008
Citizen Contact	651	544	Welfare Check	459	344

The men and women of the patrol division show up for work every day not knowing what types of calls will come in during a shift. Whether responding to fatal traffic collisions, neighborhood disputes, domestic violence calls or child abuse investigations, the deputies must be flexible and adapt to ever evolving situations.

MOBILE CRISIS RESPONSE TEAM



The Mobile Crisis Response Team (MCRT) was established in September of 2016. The team consists of a Polk County Deputy Sheriff and a Mental Health Professional. MCRT members are experts in the field and have received extra training in crisis response for emotionally disturbed persons and de-escalation techniques. Other deputies also receive this type of training, but with MCRT their primary focus is responding to people in crisis. Plus, by having professional clinicians on the scene, it helps start the delivery of critical services at the onset of a crisis.

MCRT is available to help any law enforcement agency in Polk County by enabling mental health services to begin at the onset of a crisis.

MCRT has a wide array of options to help resolve the event. Those options vary from talking with the involved person and creating a safety plan, all the way to the other end of the spectrum of placing the person under arrest or taking them into custody on a police officer hold/custody and transporting them to the hospital and everywhere in between.

In 2023, MCRT specifically responded to 395 crisis calls, up 12% since 2020. These numbers do not count many follow ups and check ins. This program is a joint effort between the Polk County Sheriff's Office and Polk County Behavioral Health.

SHERIFFS OFFICE PUBLIC SAFETY LEVY KEY POINTS

The first public safety levy was passed by voters in May 2015, for up to .45 cents per thousand of assessed value. During this period of the levy the full amount was not assessed. In fact, the first time the full amount was assessed was in late 2019.

The levy was renewed in May of 2019 by voters at a higher margin than the first time. The renewal maintains what the initial levy was for, which was for 12 patrol deputies; 5 jail staff members; 3 prosecutors in the district attorney's office; 2 support staff members in the DA's office; and a juvenile detention bed.

A vote of the people occurred in May of 2023 and passed, with a levied amount of 49.5 cents per \$1,000 of assessed value (not real market value). The proposed increase is 7 cents higher than the previous levy. Unfortunately, the cost of doing business has increased and to maintain current services, we requested a slight raise in the levied amount.