

## APPENDIX N

---

### **Improvement Design Concepts**

The following figures show the design concepts recommended by the Technical Advisory Committee for implementation. The concepts show the general design and location of recommended improvements. The actual location and design of any improvements will be determined during the project design phase.

This map is illustrative  
and is only to be used  
for planning purposes



Figure 1

Alternative 2-C : Add Turn Lanes to Existing Intersection

This map is illustrative and is only to be used for planning purposes.



**Alternative 4B: Grade Separation at Ore 22/Dallas-Rickreall Highway Intersection**

**Figure 2**

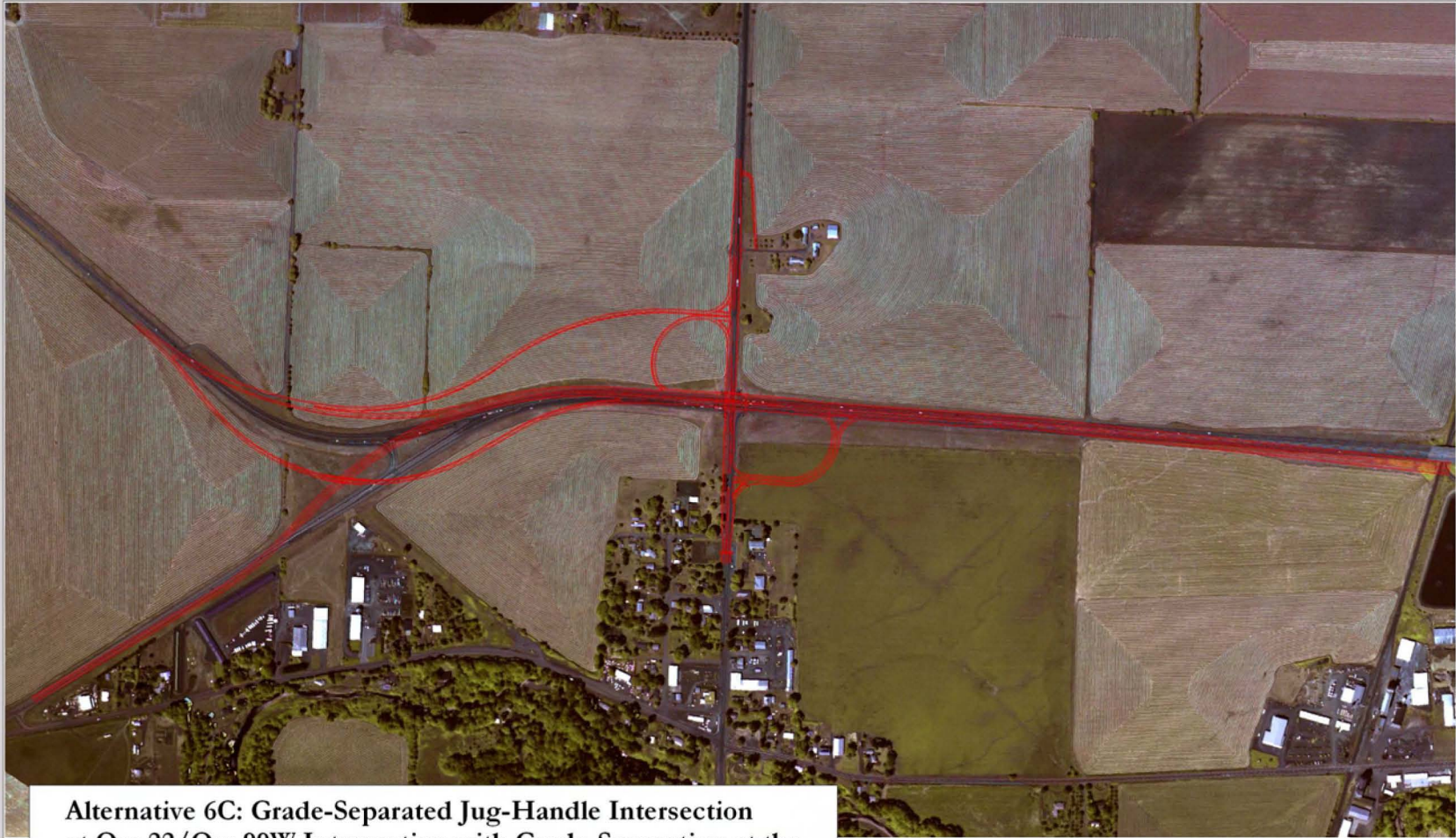
This map is illustrative and is only to be used for planning purposes.



**Alternative 5C: Grade-Separated Jug-Handle Intersection  
at Ore 22/Ore 99W Intersection**

**Figure 3**

This map is illustrative and is only to be used for planning purposes.



**Alternative 6C: Grade-Separated Jug-Handle Intersection at Ore 22/Ore 99W Intersection with Grade-Separation at the Ore 22/Dallas-Rickreall Highway Intersection**

**Figure 4**

This map is illustrative  
and is only to be used  
for planning purposes.



**Alternative 7A: Full Interchange Concept at  
Ore 22/Ore 99W Intersection and  
Ore22/Dallas-Rickreall Highway Intersection**

**Figure 5**

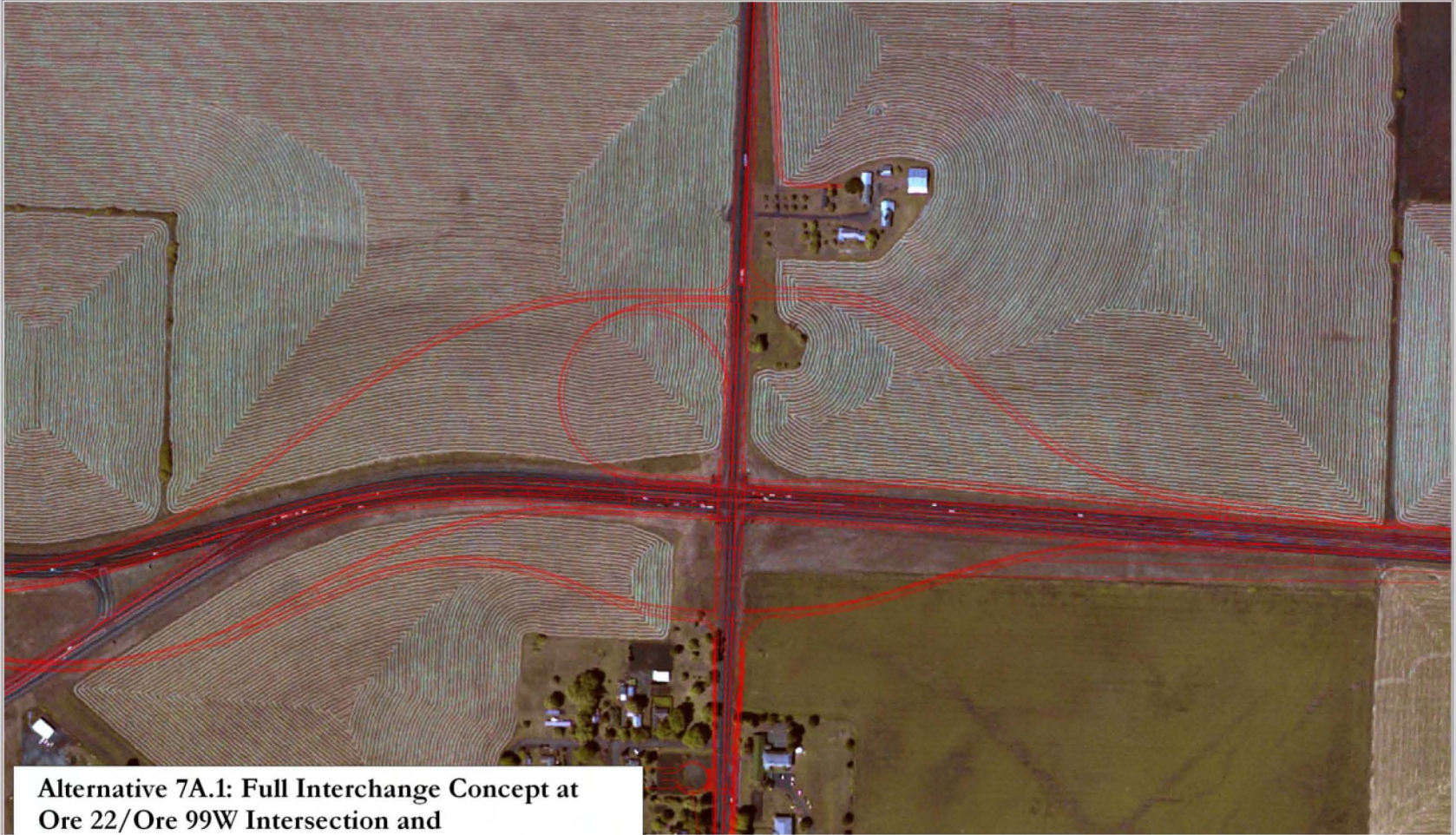
This map is illustrative  
and is only to be used  
for planning purposes



**Alternative 7A.1: Full Interchange Concept at  
Ore 22/Ore 99W Intersection and  
Ore 22/Dallas-Rickreall Highway Intersection  
with Ore 22 elevated over Ore 99W**

**Figure 6**

This map is illustrative  
and is only to be used  
for planning purposes

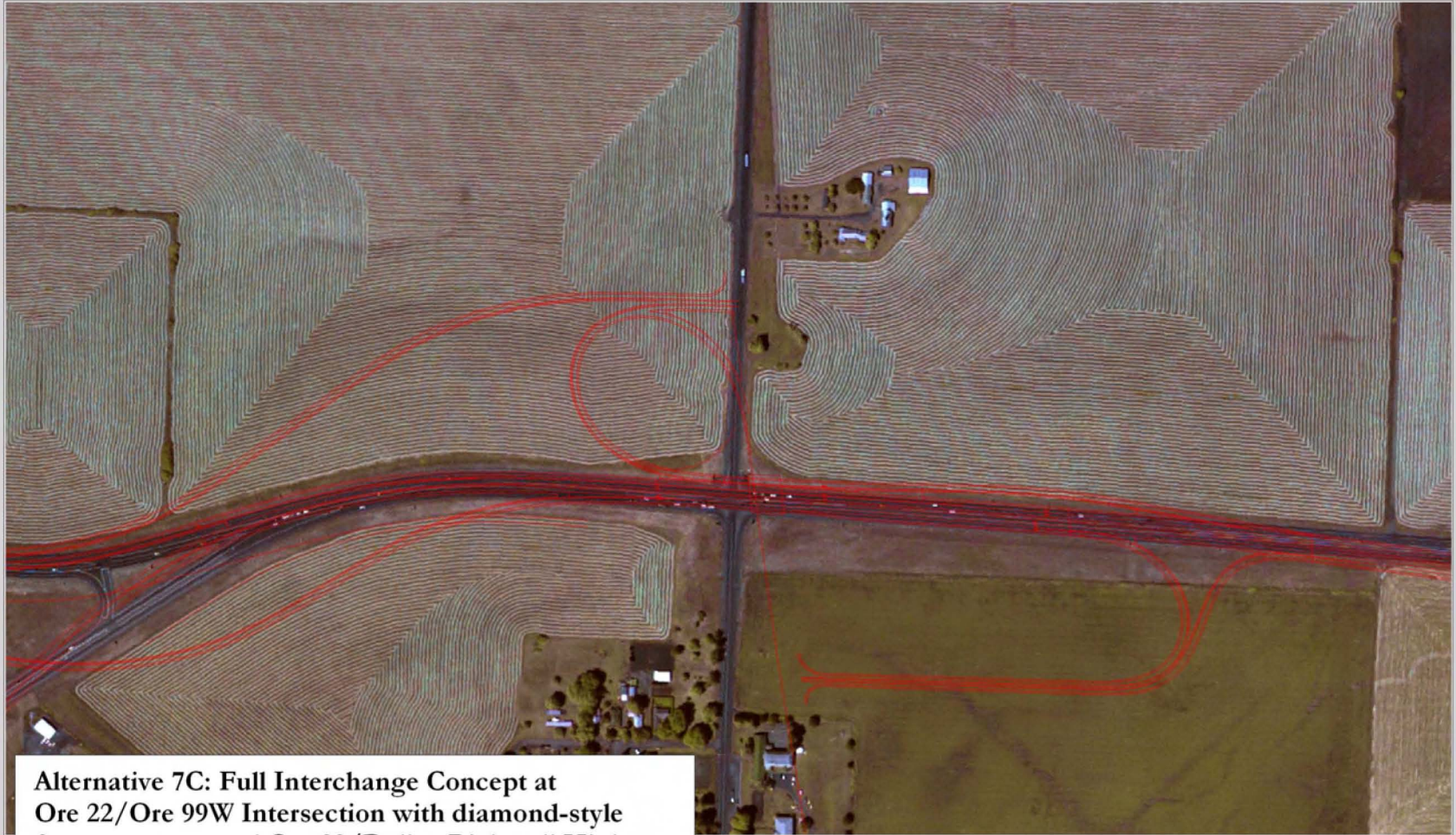


**Alternative 7A.1: Full Interchange Concept at  
Ore 22/Ore 99W Intersection and  
Ore22/Dallas-Rickreall Highway Intersection  
with Ore 99W elevated over Ore 22**

**Figure 7**



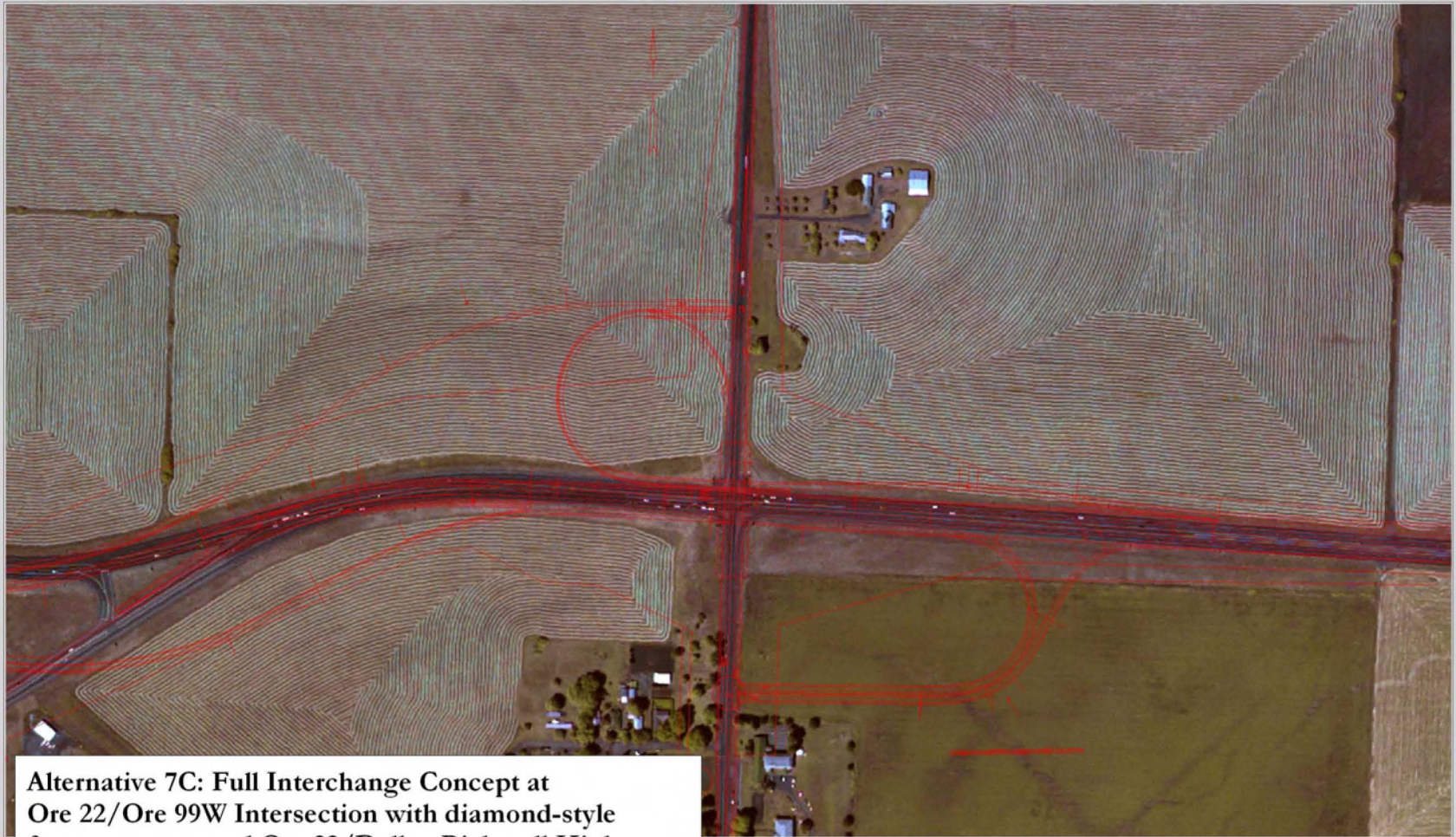
This map is illustrative and is only to be used for planning purposes.



**Alternative 7C: Full Interchange Concept at Ore 22/Ore 99W Intersection with diamond-style freeway ramps and Ore 22/Dallas-Rickreall Highway Intersection with Ore 22 elevated over Ore 99W**

**Figure 8**

This map is illustrative  
and is only to be used  
for planning purposes



**Alternative 7C: Full Interchange Concept at Ore 22/Ore 99W Intersection with diamond-style freeway ramps and Ore 22/Dallas-Rickreall Highway Intersection with Ore 99W elevated over Ore 22**

Figure 9