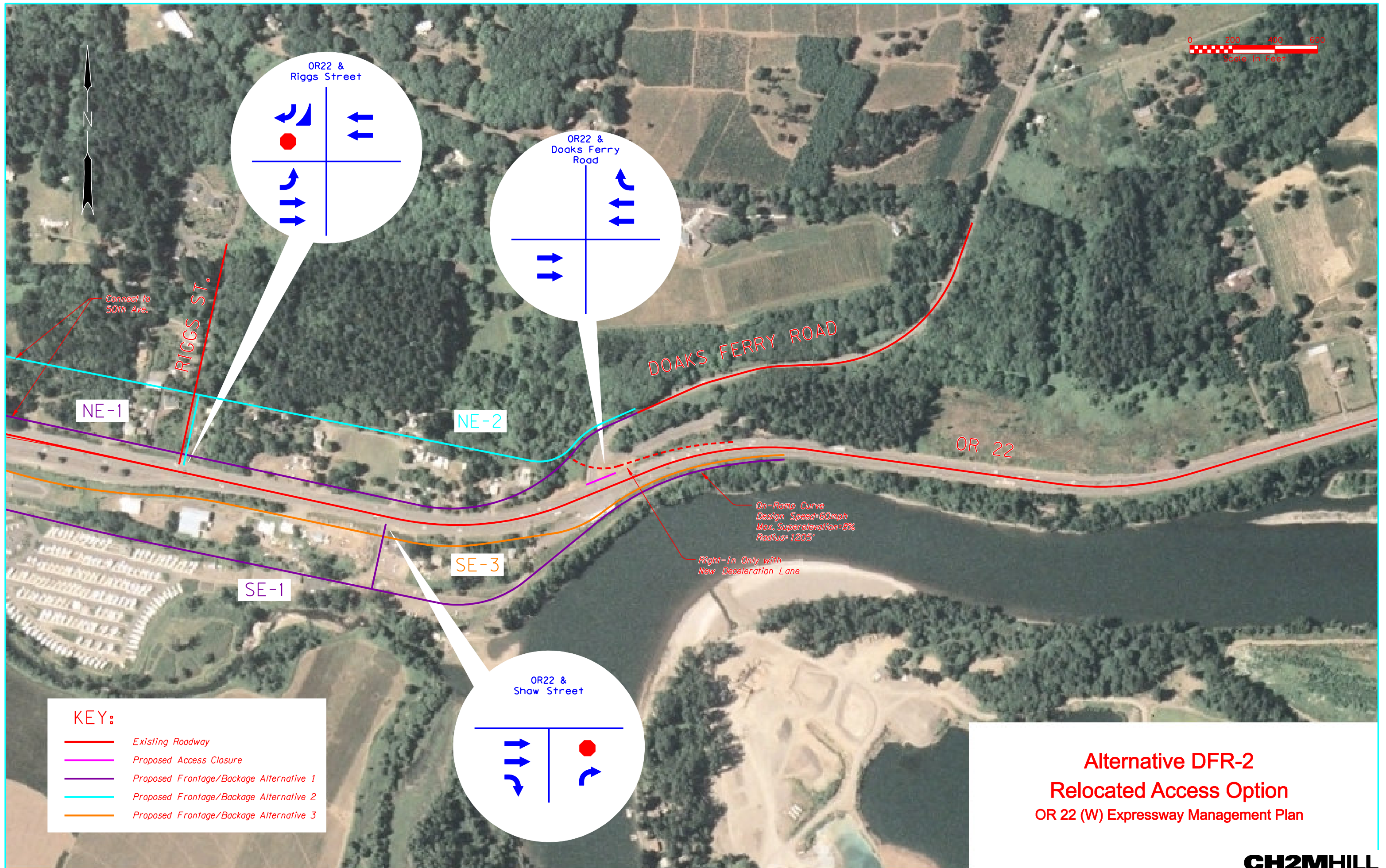
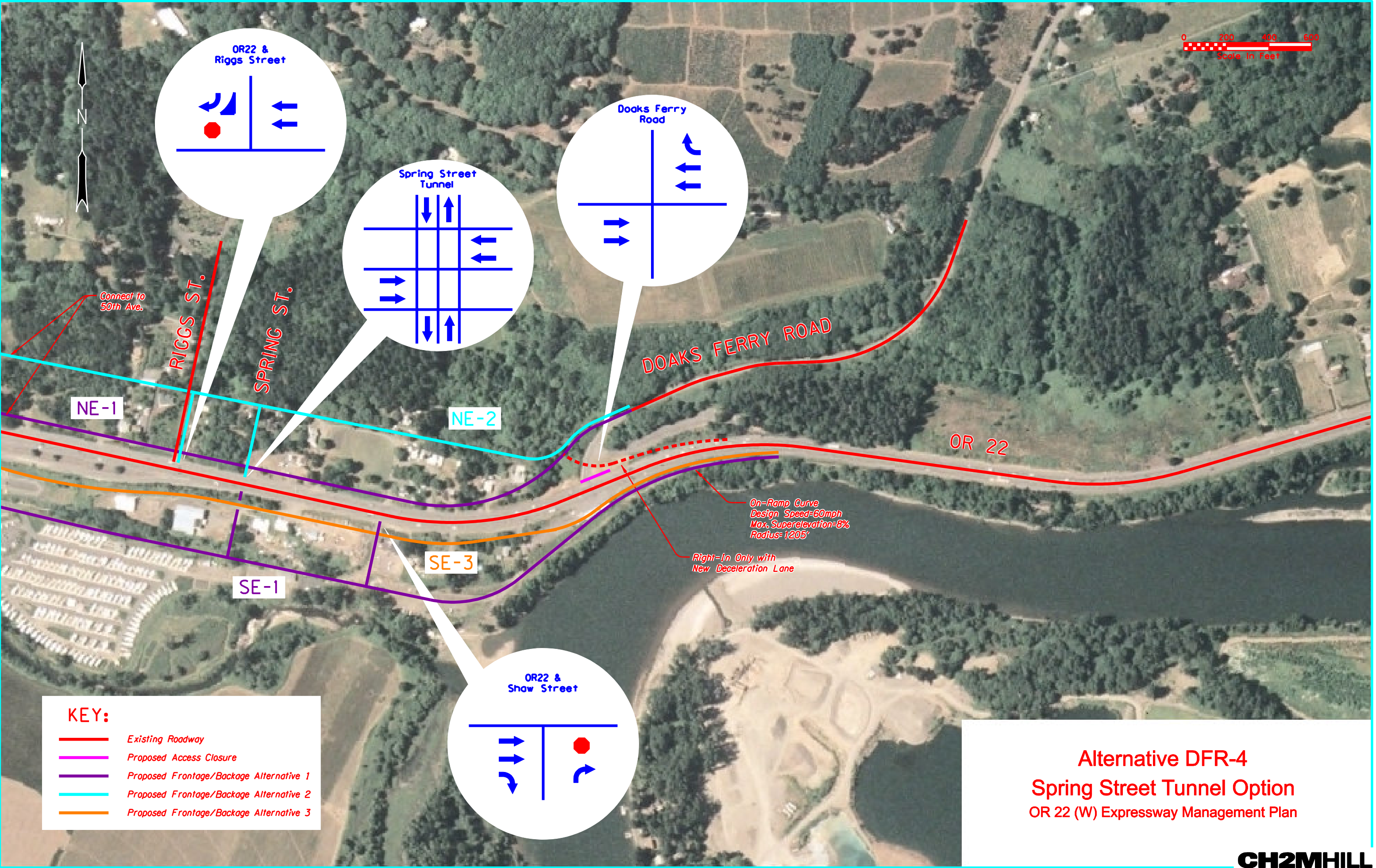


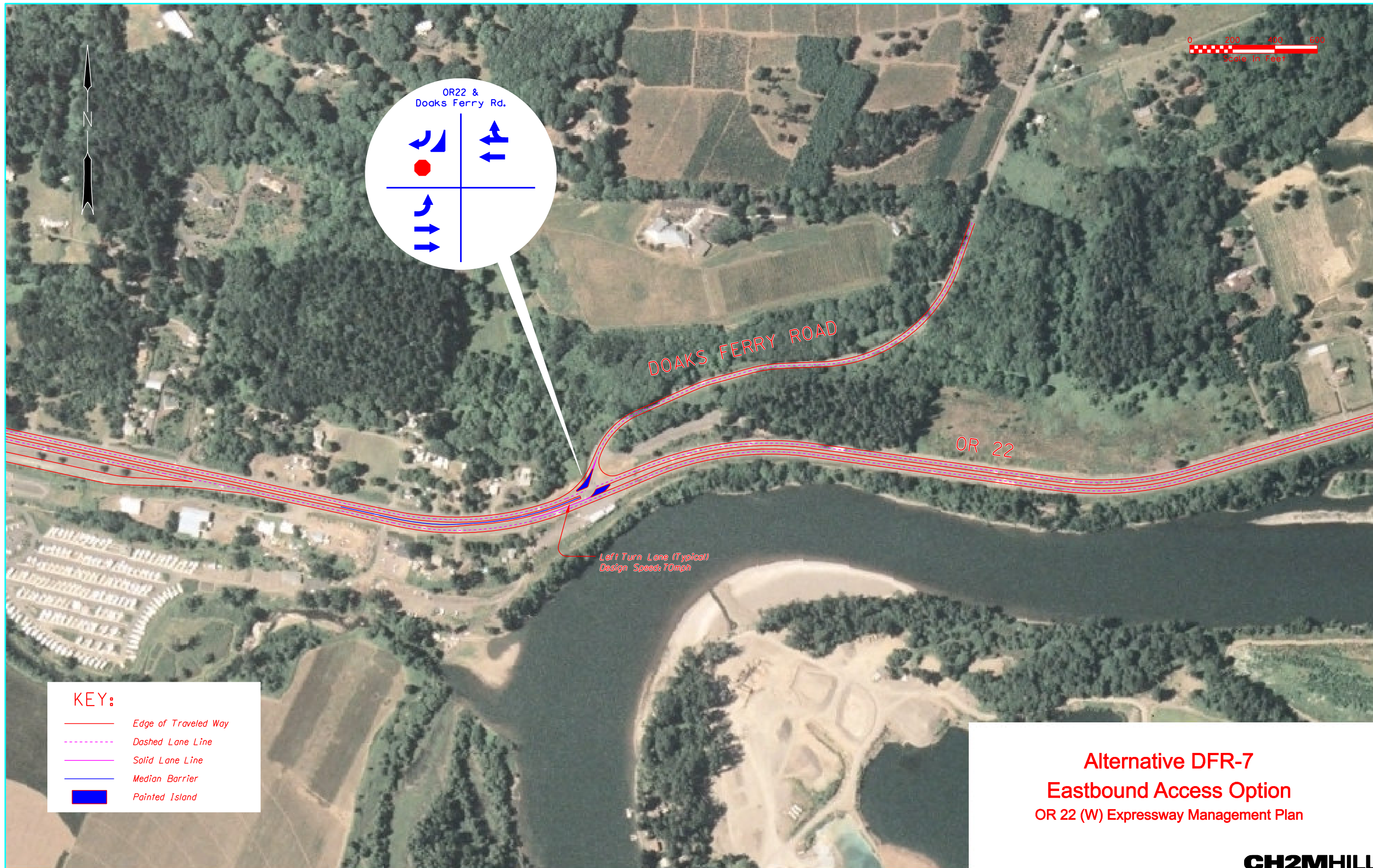
## **Alternatives Diagrams**









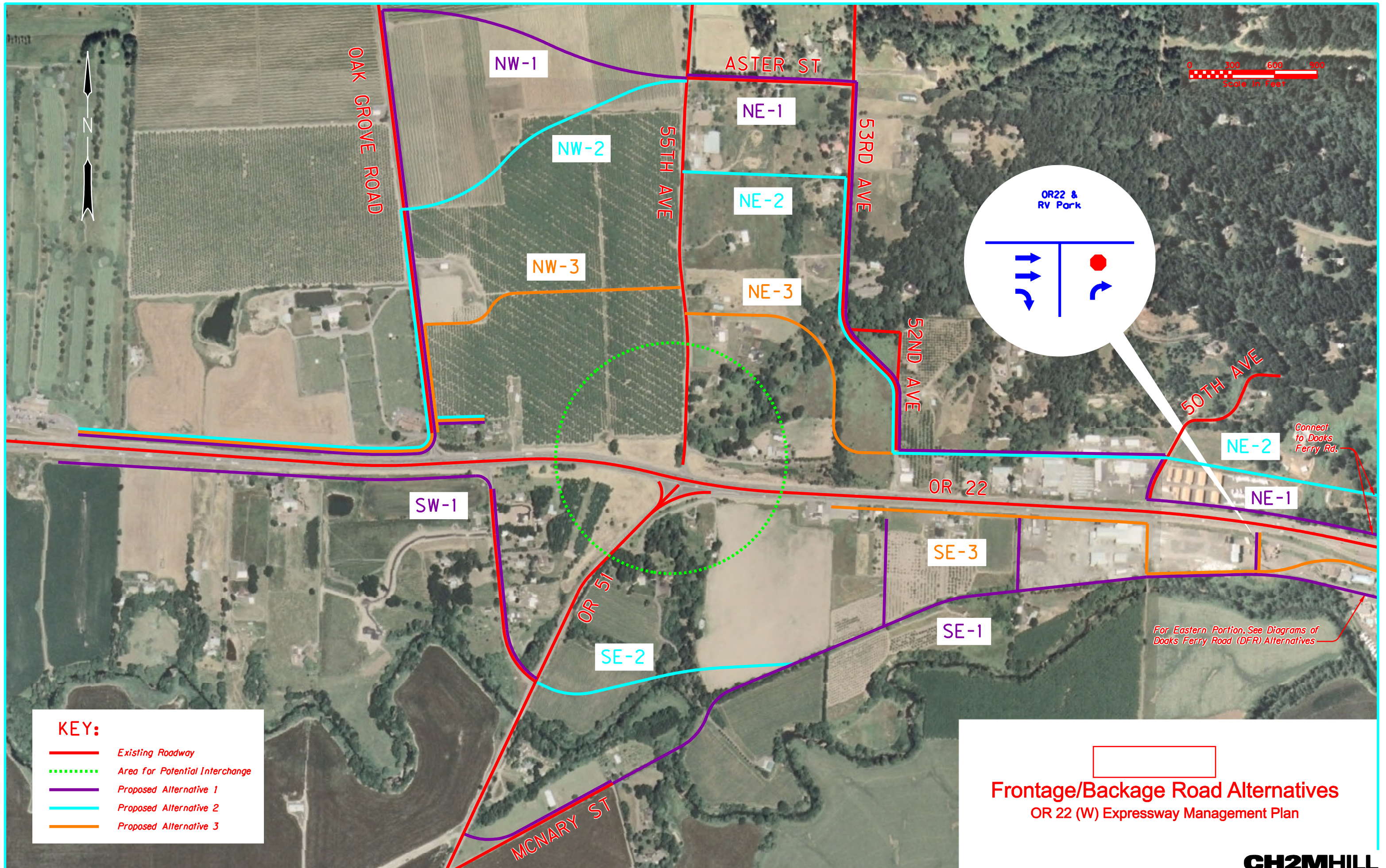


KEY:

- Edge of Traveled Way
- Dashed Lane Line
- Solid Lane Line
- Median Barrier
- Painted Island

**Alternative DFR-7**  
**Eastbound Access Option**  
OR 22 (W) Expressway Management Plan



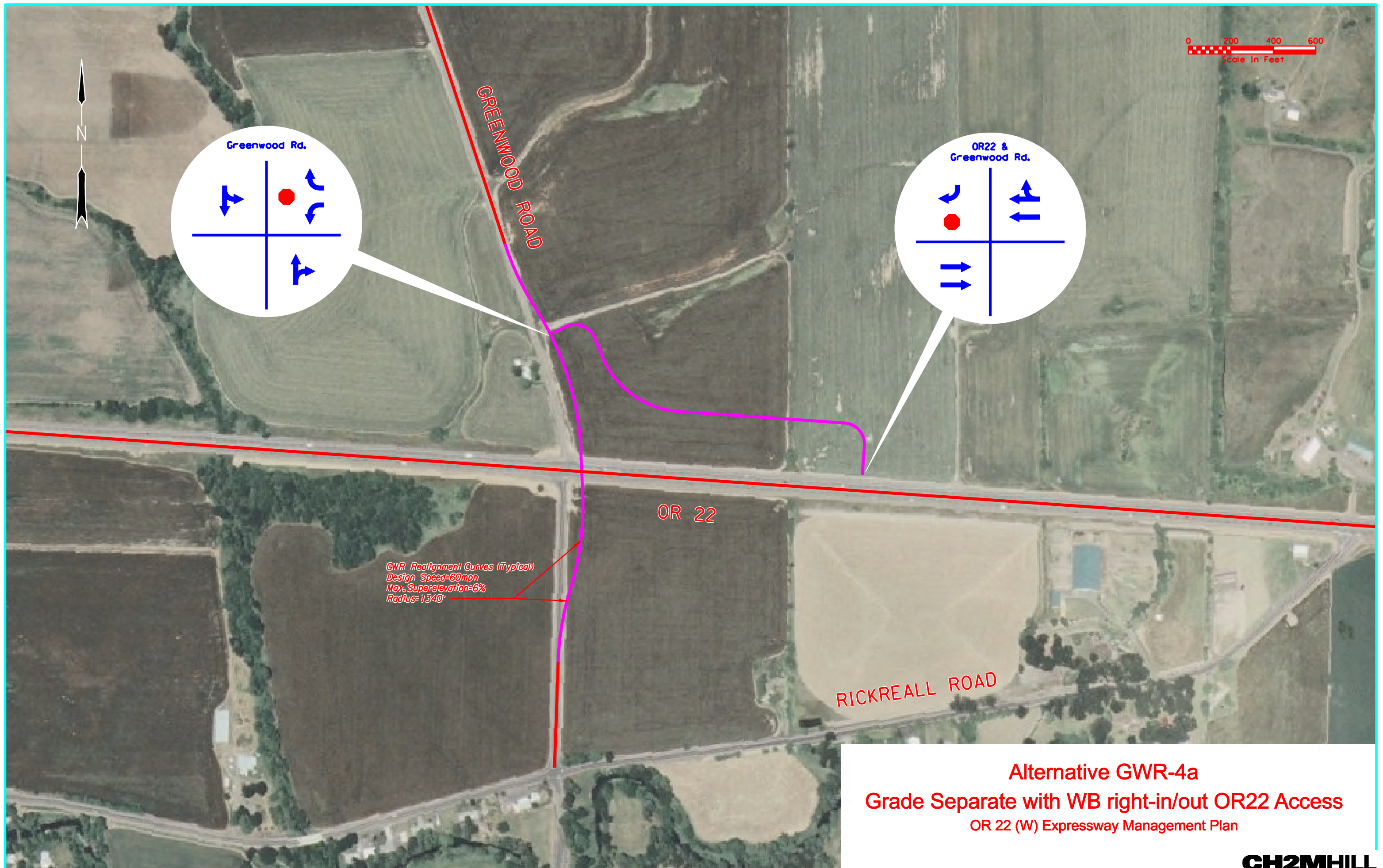


**KEY:**

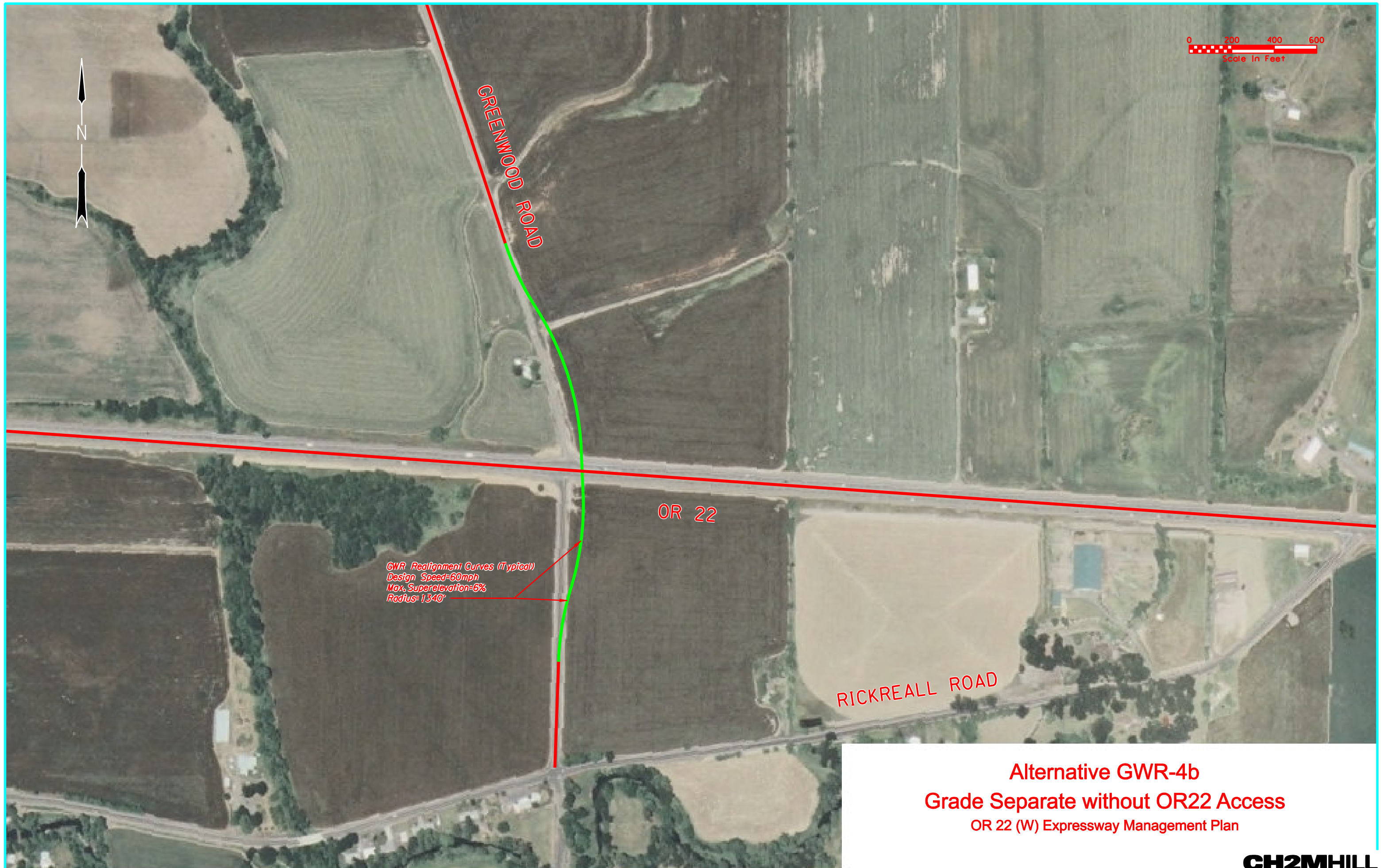
- Existing Roadway
- Area for Potential Interchange
- Proposed Alternative 1
- Proposed Alternative 2
- Proposed Alternative 3

**Frontage/Backage Road Alternatives**  
OR 22 (W) Expressway Management Plan

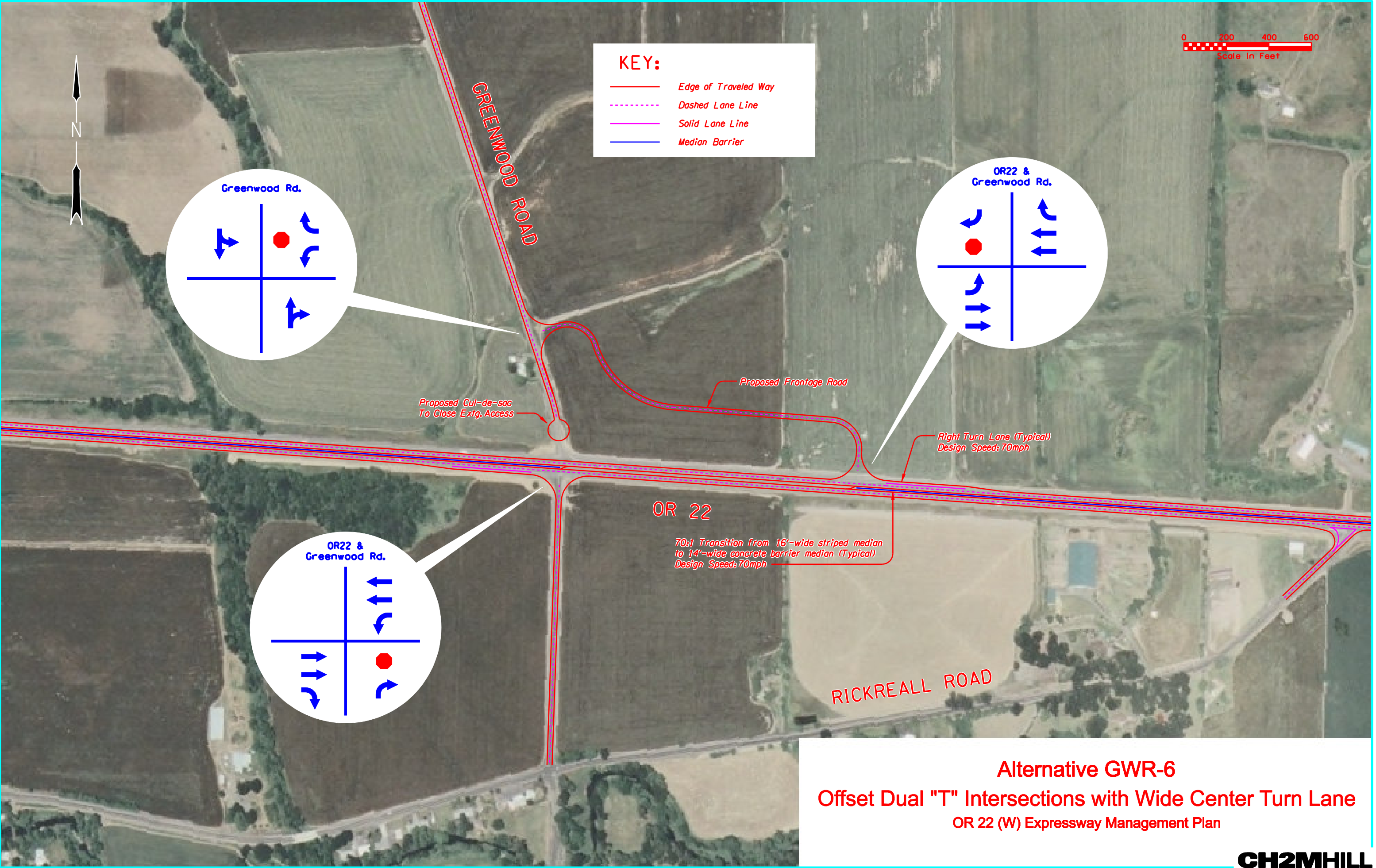




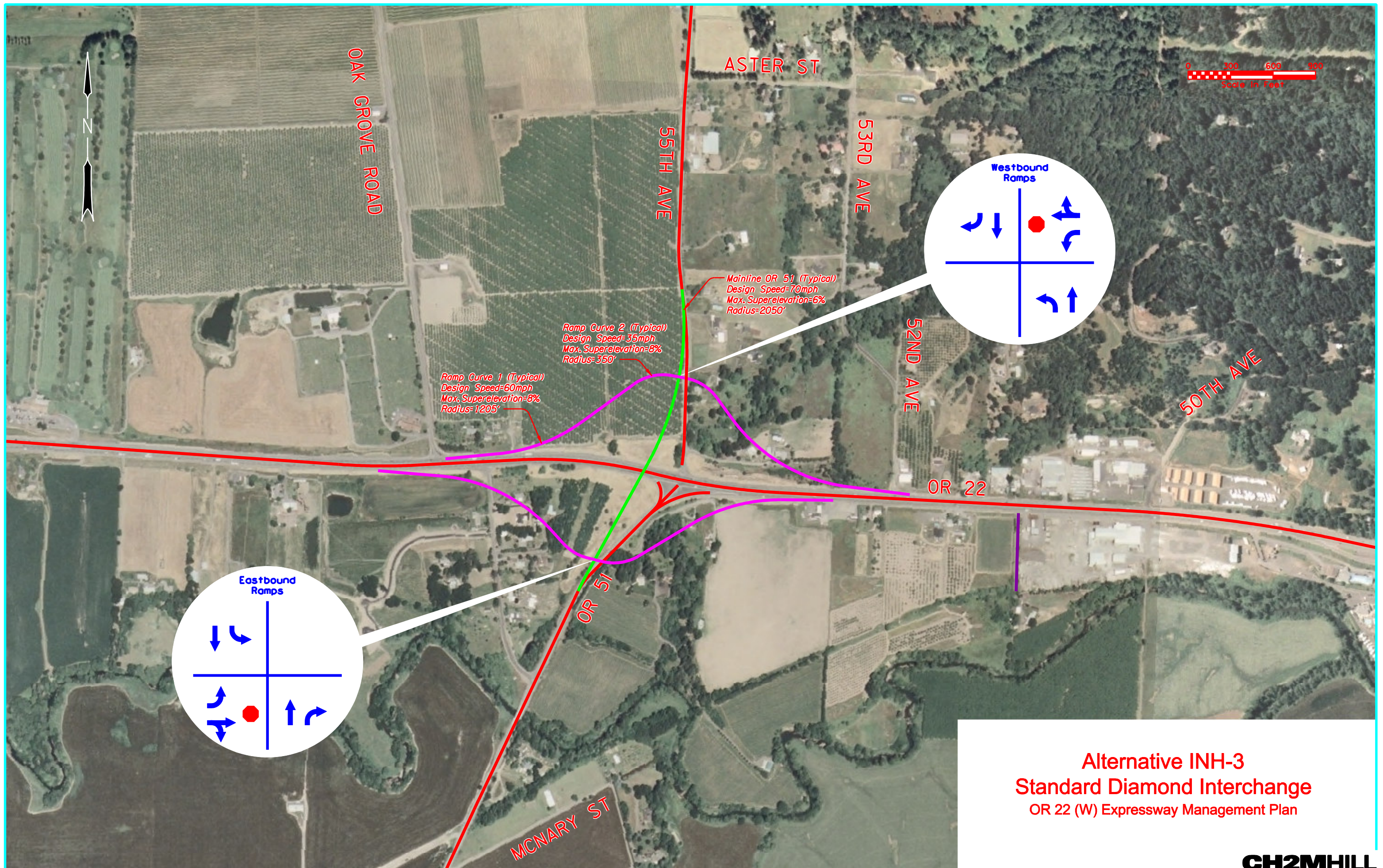
**Alternative GWR-4a**  
**Grade Separate with WB right-in/out OR22 Access**  
OR 22 (W) Expressway Management Plan





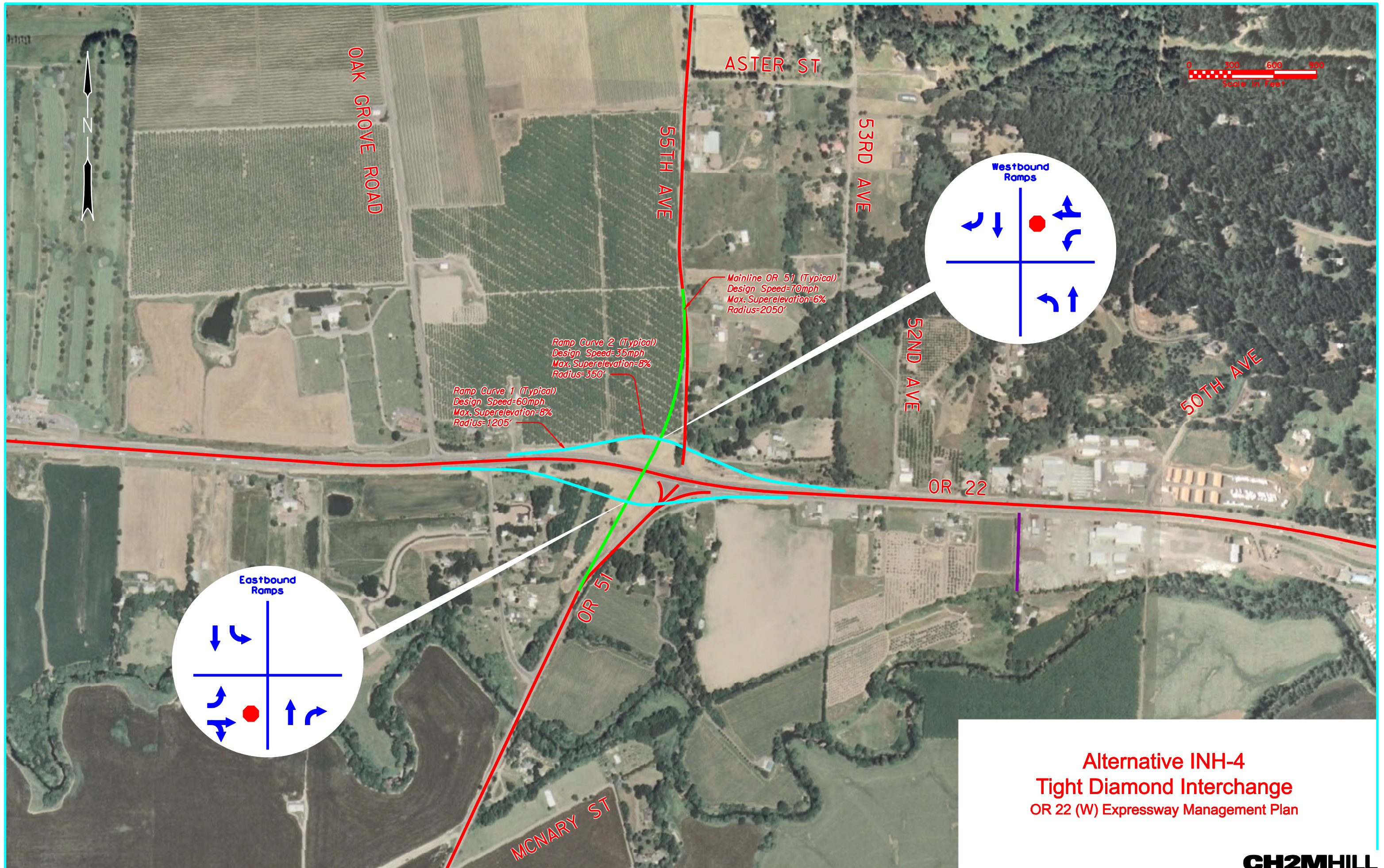




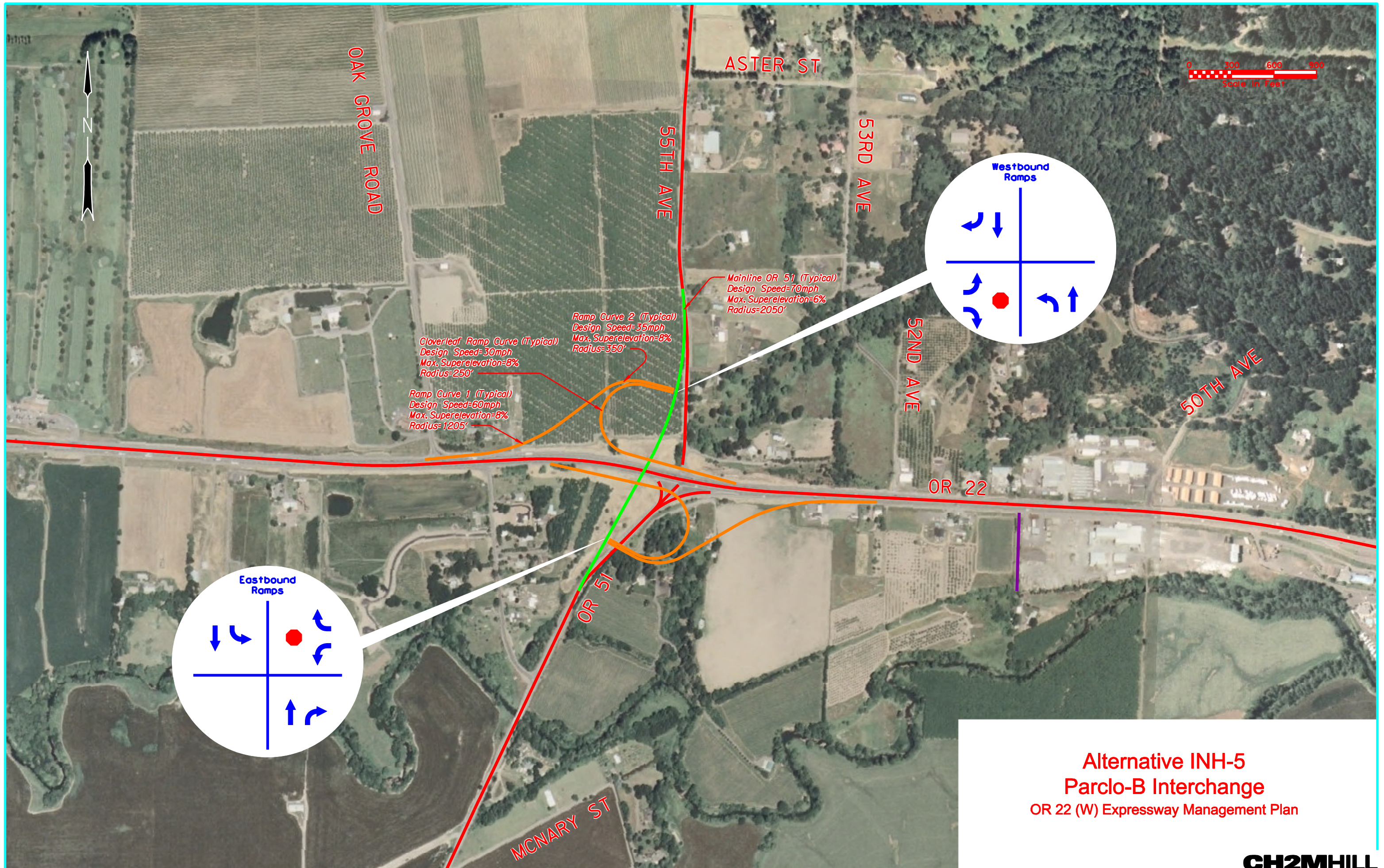


**Alternative INH-3**  
**Standard Diamond Interchange**  
OR 22 (W) Expressway Management Plan



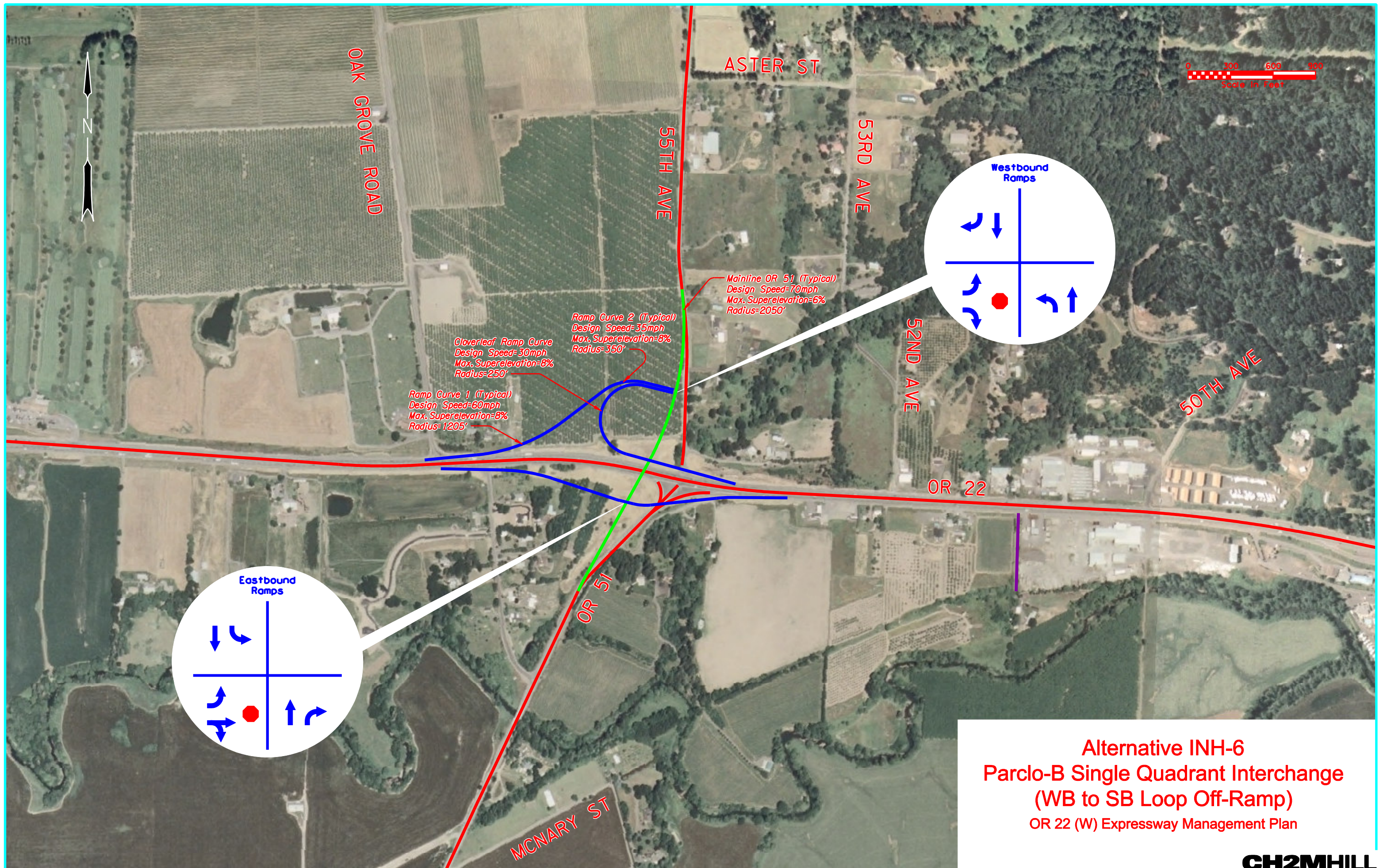






**Alternative INH-5  
Parclo-B Interchange**  
OR 22 (W) Expressway Management Plan



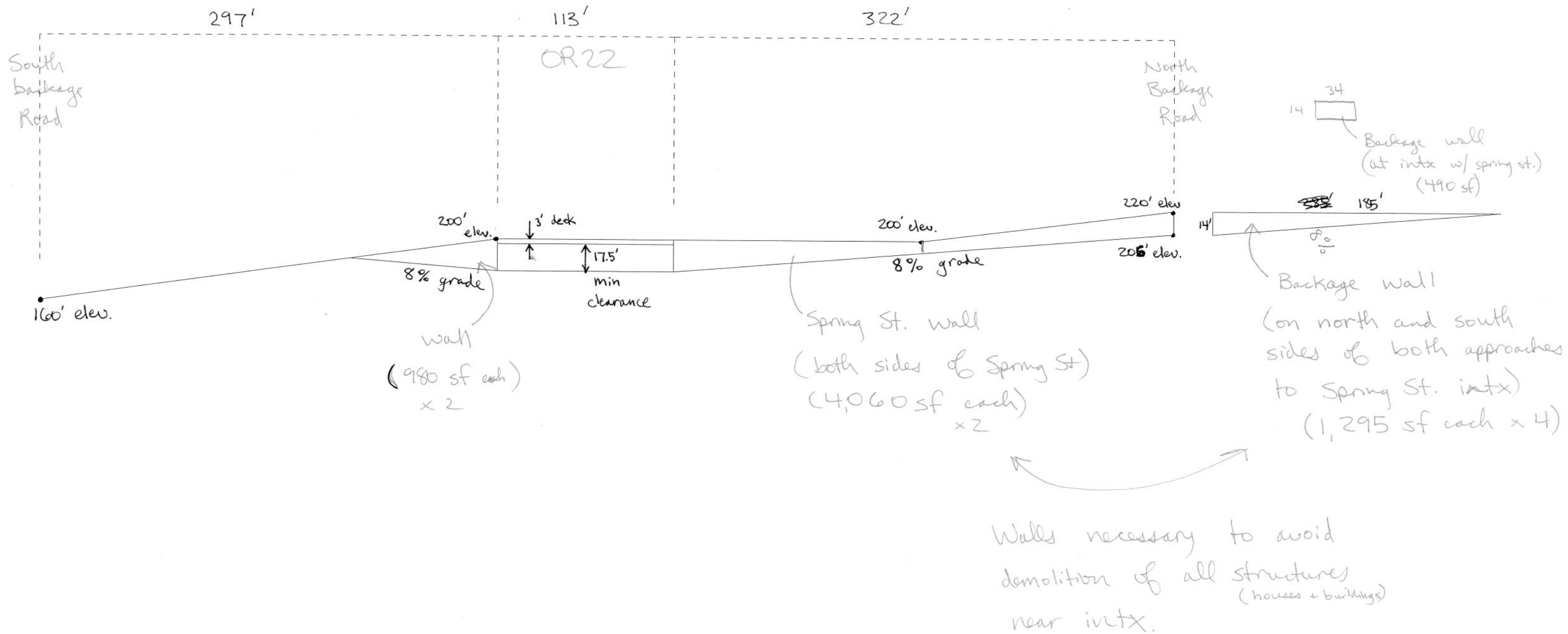


Alternative INH-6  
Parclo-B Single Quadrant Interchange  
(WB to SB Loop Off-Ramp)  
OR 22 (W) Expressway Management Plan



1-7-08

# Approx. Cross Section Spring St. Undercrossing



\* Elevations from simple topo map (Rosa\Proj\ODOT\356019\GIS\Output\Basemap-w-Topo-.5Mile-Area.pdf)



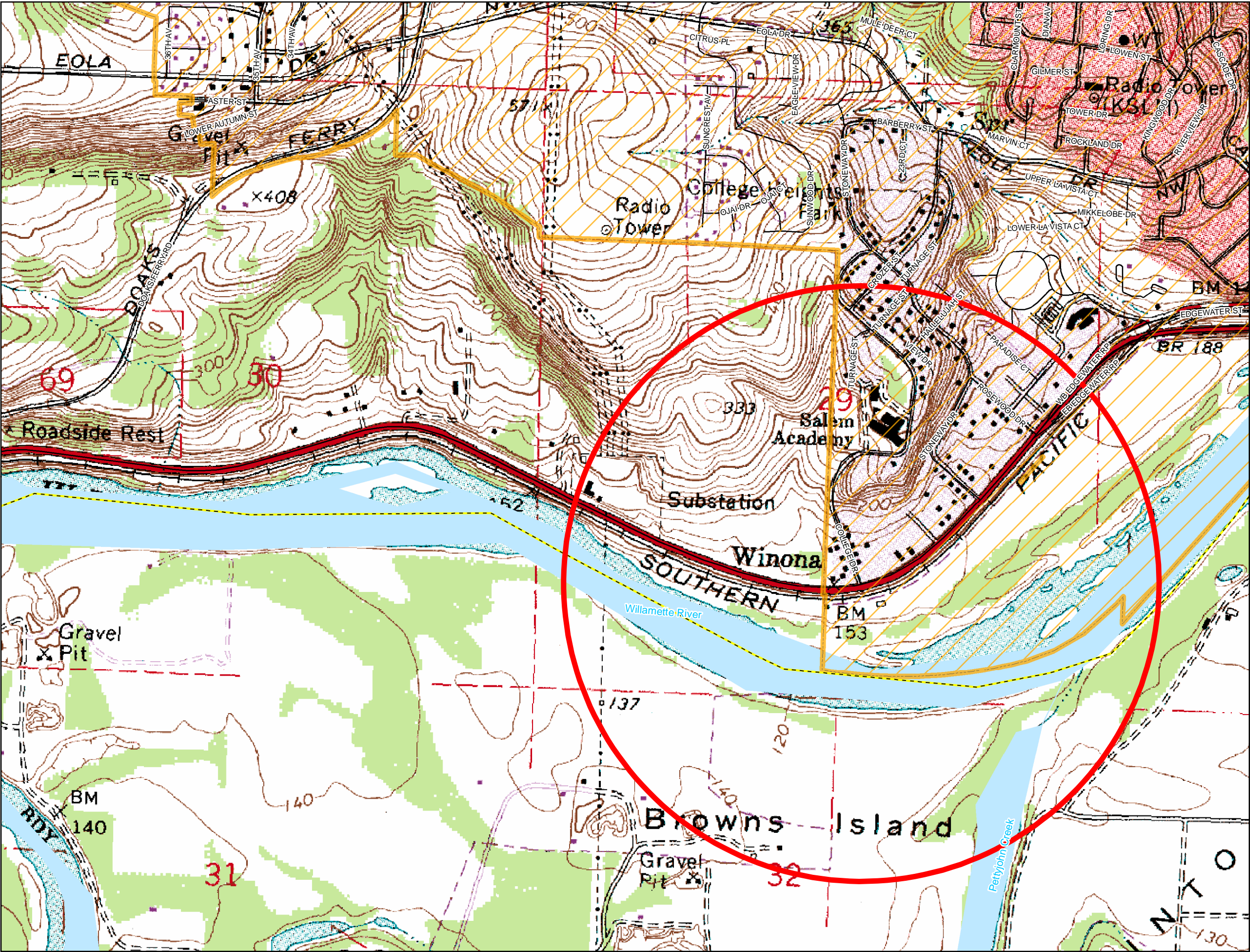
LV=37, 25, 43,  
OPTIONAL 60, 12

COLLEGE DR

STONEWAY

COLLEGE DRIVE INTERCHANGE  
60:1 SCALE





Alternative New OR 22  
Connection for  
Doaks Ferry Road  
at College Drive

LEGEND

- Possible Interchange Area
- Highways and Roads
- Creeks and Streams
- Willamette River
- Urban Growth Boundary
- Counties

SOURCE: POLK COUNTY GIS

