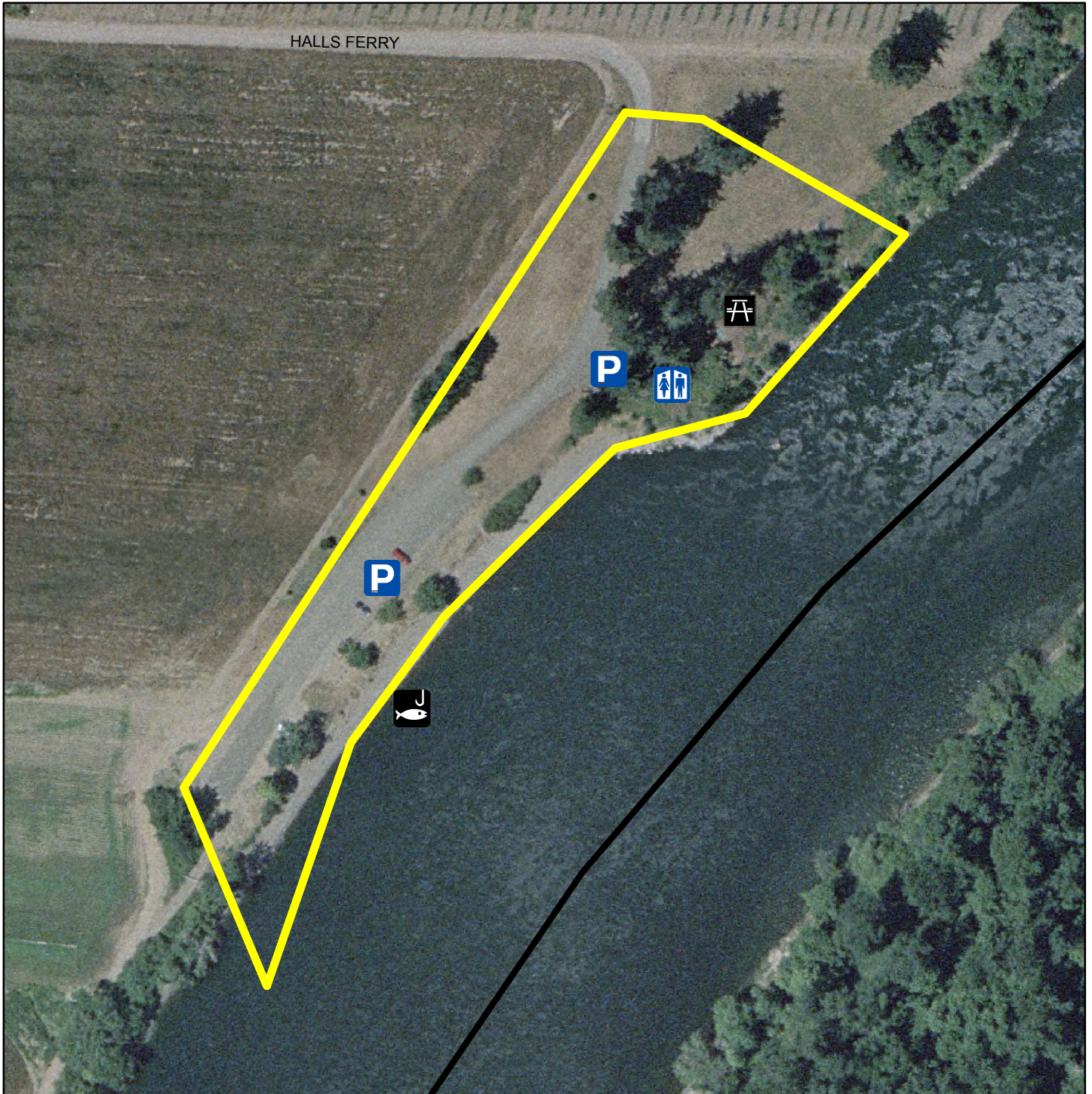


Social Security Fishing Hole



	Parking:	Yes		Fire Pit:	No
	Restroom:	Yes		Fishing:	Yes
	Walking Trail:	No		Horseshoe:	No
	Picnic Area:	Yes		Boat Dock:	No
	Playground:	No			

Open: All Year

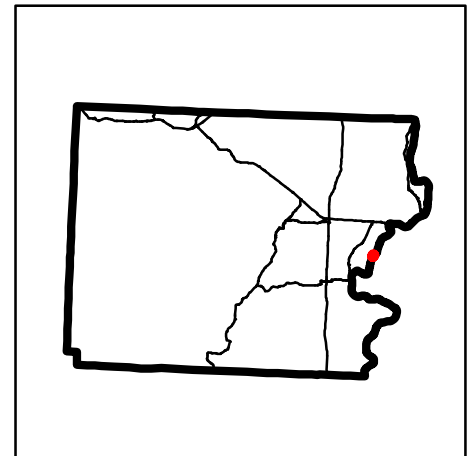
Closed: Never

Closures: Closed during high water



Date: 10/18/2010

This map was produced from the Polk County geographic databases to support its governmental activities. This product is for informational purposes and may not have been prepared for, or be suitable for legal, engineering, or surveying purposes. The County is not responsible for any map errors, possible misuse, or misinterpretation. To report a map error, please call (503)623-0713.



0 70 140 280 420 560 Feet

