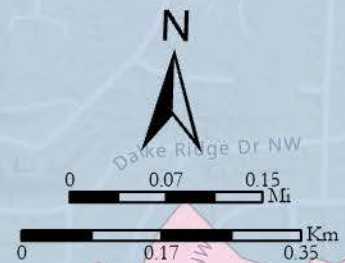
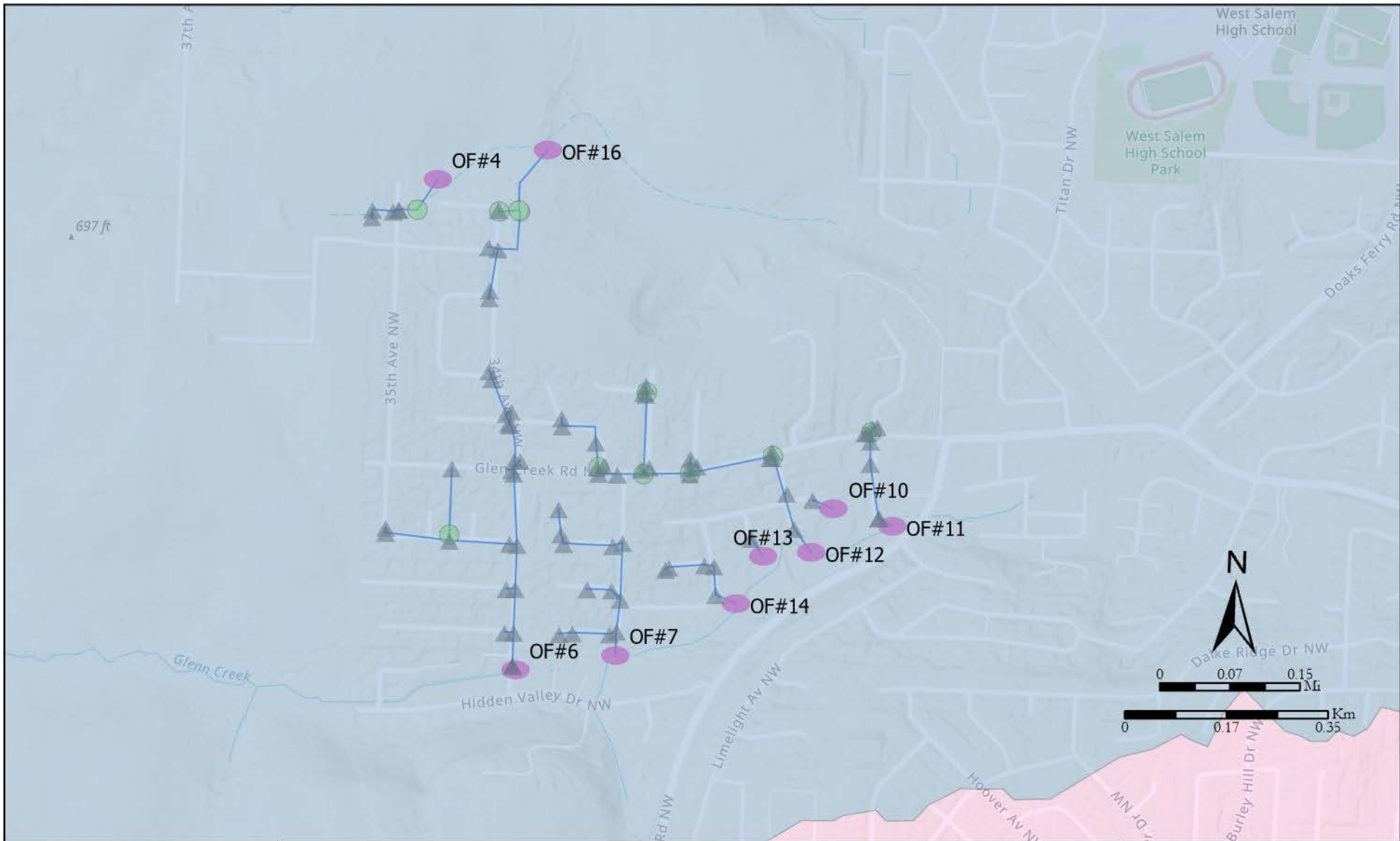


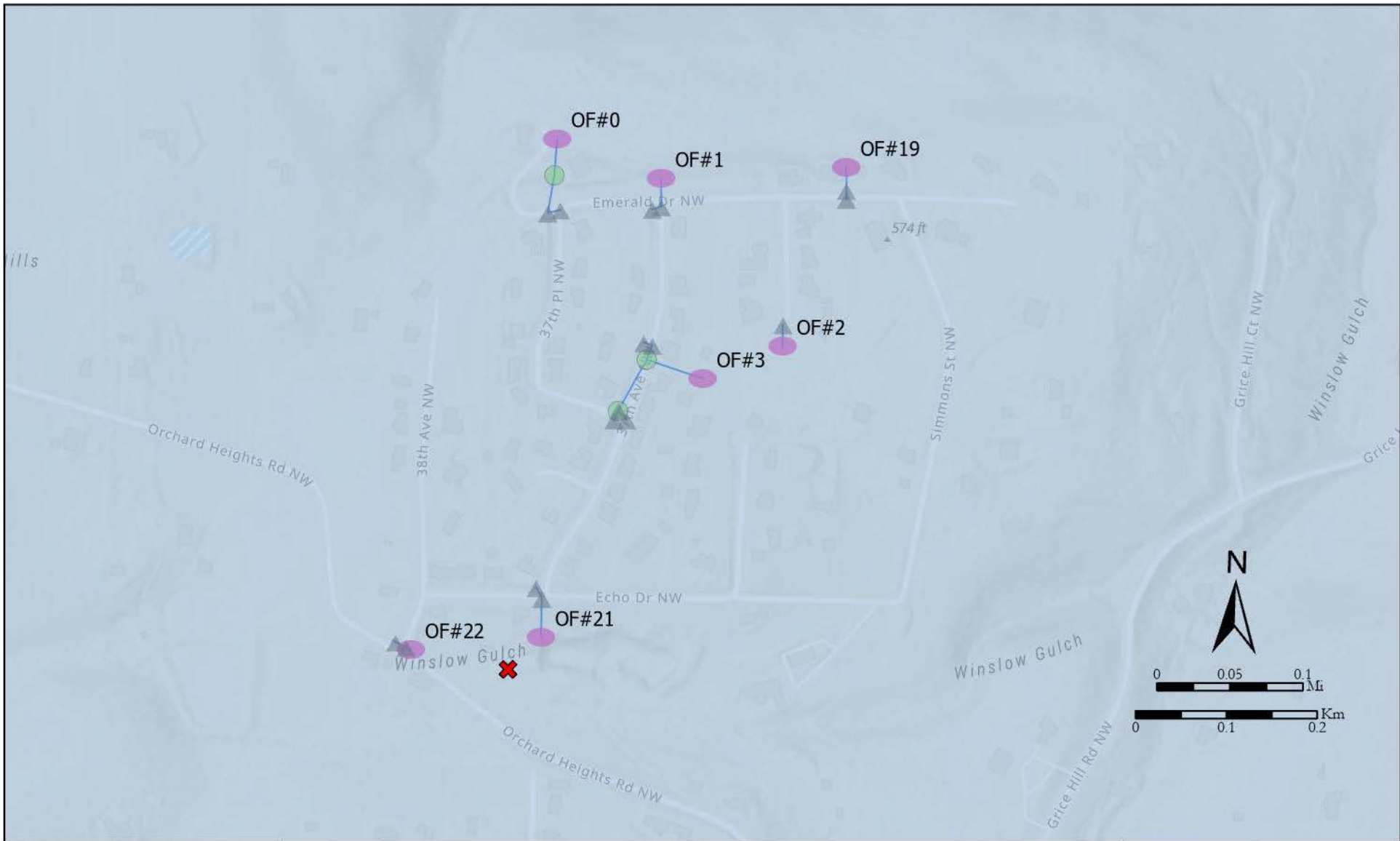
<h1>Map 1-4</h1>	
<p>This map has been developed to support Polk County business and is not to be used for assessment, survey, or navigational purposes. The county is not responsible for any errors, omissions, misuse, or misinterpretation of the data present.</p>	2023
Coordinate System: NAD 1983 HARN StatePlane Oregon North FIPS 3601 Feet Intl	

- ✘ Illicit Discharge
- Willamette Basin
- Glenn Creek Basin
- ▲ Catch Basin
- Manhole
- Outfall (OF#)
- Conveyance
- Bioswales



<h1>Map 2-4</h1>	
<p>This map has been developed to support Polk County business and is not to be used for assessment, survey, or navigational purposes. The county is not responsible for any errors, omissions, misuse, or misinterpretation of the data present.</p>	2023
Coordinate System: NAD 1983 HARN StatePlane Oregon North FIPS 3601 Feet Intl	

- ✘ Illicit Discharge
- Willamette Basin
- Glenn Creek Basin
- ▲ Catch Basin
- Manhole
- Outfall (OF#)
- Conveyance
- Bioswales



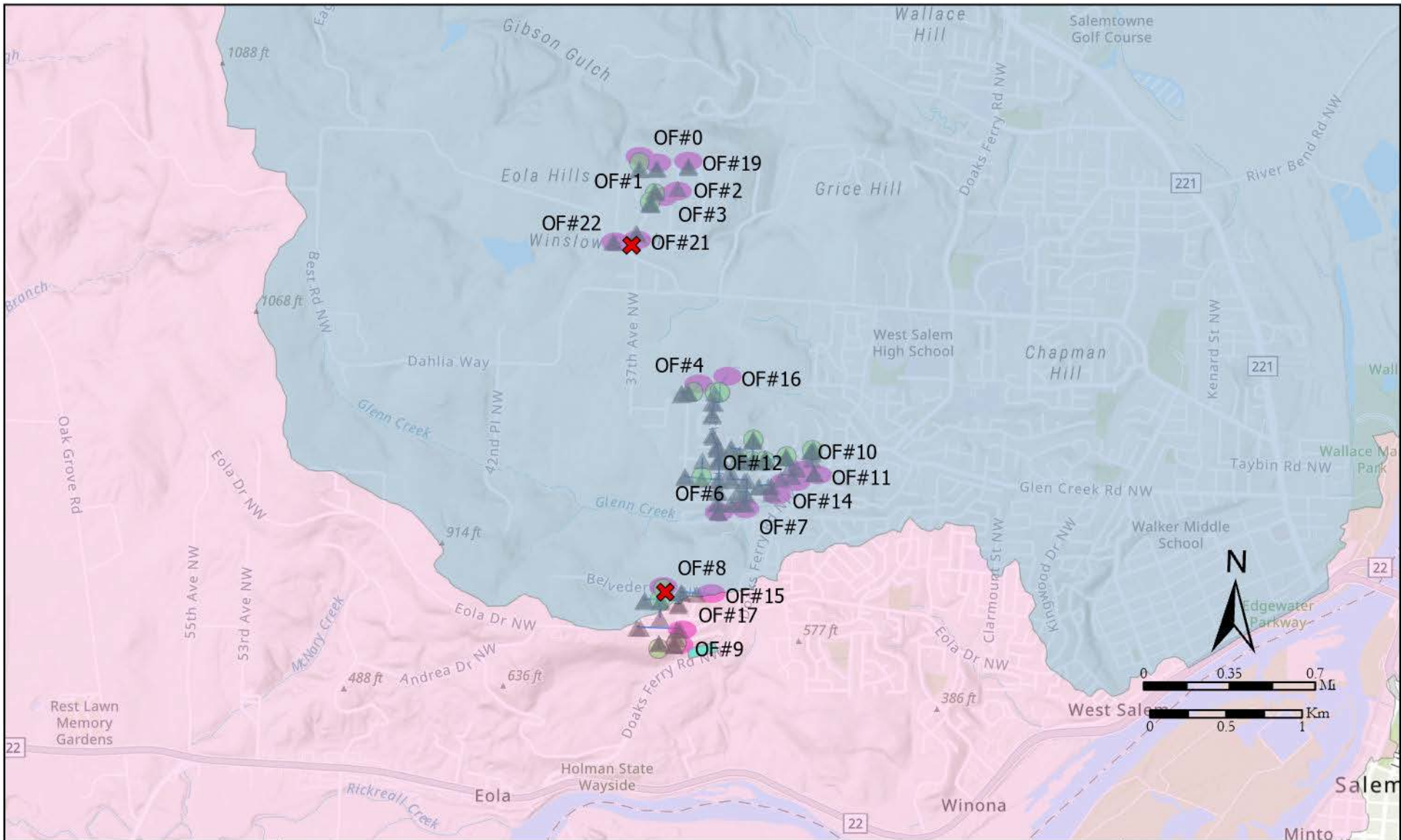
Map 3-4

This map has been developed to support Polk County business and is not to be used for assessment, survey, or navigational purposes. The county is not responsible for any errors, omissions, misuse, or misinterpretation of the data present.

2023

Coordinate System: NAD 1983 HARN StatePlane Oregon North FIPS 3601 Feet Intl

- ✘ Illicit Discharge
- Willamette Basin
- Glenn Creek Basin
- Catch Basin
- Manhole
- Outfall (OF#)
- Conveyance
- Bioswales



Map 4-4

This map has been developed to support Polk County business and is not to be used for assessment, survey, or navigational purposes. The county is not responsible for any errors, omissions, misuse, or misinterpretation of the data present.

2023

Coordinate System: NAD 1983 HARN StatePlane Oregon North FIPS 3601 Feet Intl

- ✘ Illicit Discharge
- Willamette Basin
- Glenn Creek Basin
- ▲ Catch Basin
- Manhole
- Outfall (OF#)
- Conveyance
- Bioswales