



Mid-Willamette Valley

COMMUNITY ACTION

Compassion in Motion

What is a Community Action Agency?

- **OUR HISTORY:** Community Action, 60 Years in the Making
- **OUR MISSION & VISION**
 - *Empowering people to **exit poverty** by providing vital services and community leadership; All people are respected for **their infinite worth** and are supported to envision and reach a positive future.*
- **SERVICE Profile:** Marion, Polk and Beyond
- **OUR APPROACH**
 - Programs designed to promote client **self-sufficiency**; and **harm reduction**.
 - **Mission driven**, not program driven; **client centered**, not agency-centric.
- **WHO WE ARE**
 - **Organize** community-wide resources to fight poverty
 - **Provide Services** to the low-income community; **holistic services** not issue specific
 - **Advocate for, educate** the community on, issues facing people in poverty

Support For Those Experiencing Homelessness



Assistance For Improving Home Weatherization



Resources For Child Care Seekers & Providers



Help For Those Unable To Pay Energy Bills



Nutrition Resources For Child Care Providers



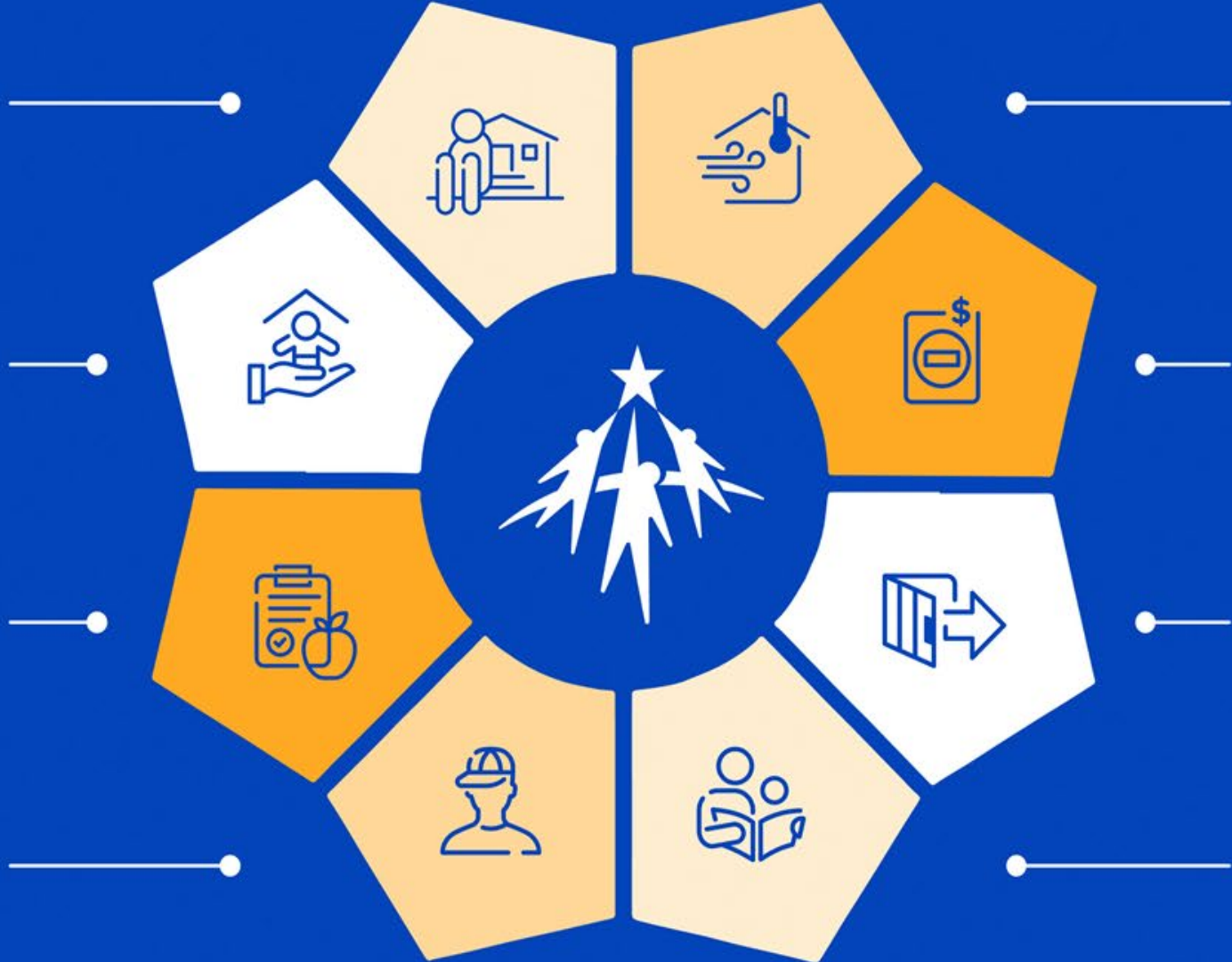
Help For Those Exiting Incarceration



Support For Homeless And At-Risk Teens



Resources For Early Childhood Development (Head Start)



Community Resource Program – ARCHES Project

ARCHES is a robust homeless service provider for Marion and Polk counties



- Shelter
- Food
- Hygiene



- Barrier removal
- Education
- Access



- Assessment
- Demographics
- System Design



- Long-term Outcomes
- Wrap-around Services



Day Center



- ▶ Mail boxes
- ▶ Bus passes
- ▶ Hygiene Kits
- ▶ Sack lunches & pet food
- ▶ Resource navigation
- ▶ Hot lunches
- ▶ Showers
- ▶ Laundry
- ▶ Computer & telephone access

During 2022, 647 service transactions for rural Polk residents

Avg. 46% increase from 2021

ADDITIONAL SERVICES

- HIV screening and COVID Vaccination
- Primary health care and health navigation (*JD Health & Wellness, NW Human Services*)
- Veterinary services
- Bike/Cart storage
- Warming network extension – early/late closing
- Holiday openings and meal services
- Community Partnerships: *Parking lot evening meals, Helping Hands, Dental Van, Clothing Closet, and resource fairs*





Extreme Weather Response

Cooling/Warming Shelters

Rural Polk Contracts –
totaling \$65,000





Outreach

ARCHES Outreach & Fuerza Campesina teams visit known camps weekly.

Provision of tarps, tents and sleeping bags, to cookware, pet supplies, housing navigation, shelter transportation, and hygiene supplies.

Direct placements into MWVCAA shelters

Providing aid to 351 rural Polk residents = 1,350 service transactions

SUPPORTIVE SERVICES

Rural
Resource
Centers



Veteran
Services

Housing
Navigation

RENT

Tenant
Education





COORDINATED ENTRY

A Guided Process

- Monday – Friday
 - 8:30am – 3:00pm
by phone & at
ARCHES
- Monday & Tuesdays
 - PFCO

***105 currently
unsheltered in
rural Polk County***

Client
Lead

Mutual
Respect

Trauma
Informed

HOUSING PROGRAMS

\$779,899 in rural Polk Assistance = 94 Households



TANNERS PROJECT



Use of Veteran
By Name List



Mental
Health
Supports



36 Beds –
10 Polk County



Unsheltered
Veterans



ARCHES Inn/Lodge

- Chronically homeless shelter with Medical Fragility preference
- Wrap around services to permanent housing
 - *Navigation to housing*
 - *Obtain personal identification documents*
 - *Access economic development opportunities*
 - *Develop skills to manage Activities of Daily Living (ADL's)*
- Provision of basic need services
- Enrollment with JD Health & Wellness

5 Polk Households currently in shelter including 1 high profile case



Navigation Center

- Centralized facility complete with shelter beds & basic need supports, designed to provide immediate stabilization services and connection to vital resources.
 - *With the goal of permanent housing exits and increasing long-term housing outcomes*
- Navigation is **NOT** a Day Center
 - *Accessible to Nav Center clientele only*
 - *Estimated length of stay 90 days*
- 75 congregate shelter beds



**First resident was a rural
Polk female**



Additional Projects

- COVID Rent Relief:
 - Over 36 million dollars distributed in emergency rental assistance to COVID impacted households since June 2020.
 - 25% of all dollars re-allocated to PFCO
- Community Capacity Building:
 - Fund *area homeless shelters to support case management services, operational costs, and street outreach efforts.*
 - *Polk Co. Family and Community Outreach – Resource Center, Veteran shelter, Warming*
 - *Sable House*
 - **Total \$795,000 in 2022**



Emergency Solutions Grant (ESG)

- History of ESG
 - HUD – Office of Special Needs Assistance Programs
 - HEARTH ACT (2009)
 - Emergency Solution Grant (2011)
 - Statewide allocation via Community Action Agencies
 - Ruling was adopted by Statue ORS 456.55, in chapter 813, Division 145, Condition 1, under Administration.
 - Continuum of Care authorization via MOU
 - “WHEREAS, Community Action: (a) is designated... (b) is the region’s primary recipient of ESG program funds; (c) has the experience and capacity...”

Emergency Solutions Grant (ESG)

- Annual allocation from Oregon Housing and Community Services per state statute.
 - Total: \$243,140.00 annually
 - Program : \$236,742.00
 - Admin: \$6,398.00
- Funds to provide staffing capacity and supplies to ARCHES Outreach
 - Salary & fringe of .2 FTE Program Manager, .5 FTE Program Coordinator, 3 FTE Outreach Coordinators = \$216,652.91
 - Outreach supplies (e.g. tents, tarps, sleeping bags, backpacks, food/water): \$26,487.09

Polk Outreach Services

- Access
 - Dedicated MWVCAA outreach
 - Tuesday from 9am-1pm
 - Thursday from 1pm-5pm.
 - Request assistance by calling **(971) 304.9802**.
 - Line is monitored weekdays 8am-7pm.
- Polk FCO and MWVCAA Collaboration
 - Bi-weekly collaborative case conferencing
 - MWVCAA provides expanded list of basic need services (e.g. tents, tarps, sleeping bags, socks, underwear, etc.)
 - Direct placement into MWVCAA shelters
 - Access to Coordinated Entry system



Emergency Solutions Grant (ESG)

- Mid-Willamette Valley Community Action Agency is requesting formal Polk Co. approval of OHCS - ESG allocation for the utilization of sustaining ARCHES Outreach services for FY 23 and FY 24.

Emergency Solutions Grant Certification of Polk County Approval for Sub-grantee's Proposed Use of OHCS 2023 – 2025 ESG Funds

I, _____, duly authorized to act on behalf of, Polk County, hereby approve the project(s) listed below proposed by Mid-Willamette Valley Community Action Agency, which serves Marion and Polk Counties:

Project Name:	Mid-Willamette Valley Community Action Agency – ARCHES Project Mobile Outreach
Target Population:	Unsheltered and chronically homeless
Proposed Services:	Salary and fringe benefits for Outreach staff who provide resource navigation (especially to shelter, coordinated entry, and housing), provision of basic need items, transportation to services, response to citizen/local government/partner/emergency services requests, and community partner collaboration. All services are aimed at improving quality of life outcomes, as well as increasing positive entries into housing.



Mid-Willamette Valley
COMMUNITY ACTION
Compassion in Motion

Jimmy Jones
Executive Director
Phone: 503-585-6232
Email: Jimmy.Jones@mwvcaa.org

Ashley Hamilton
Chief Program Officer
Phone: 503-399-9080
Email: Ashley.Hamilton@mwvcaa.org